



BURLINGTON AREA SCHOOL DISTRICT

A great place to learn. A great place to work. Serving a great community.

TABLE OF CONTENTS

2024-2025 School Year

- Message from the Superintendent 2
- 2024-25 District Changes & BASD Strategic Plan..... 3
- Redistricting 4
- Grade Level Information5
- School Tours 5
- School Start & End Times6
- Transportation6
- Pick up / Drop off Maps 7
- Wednesday Late Start & Camp Innovation Information 8
- Burlington BAC (Before & After Care) 9
- 2024-25 Calendar 10
- Back to School Open House 11
- PTO Information.....11
- Contact Us..... 11
- Frequently Asked Questions ... 12

Welcome to Winkler Elementary!

We are excited for your student(s) to continue with us and/or join the Winkler family within the BASD community!

For the 2024-2025 school year, we will have 5K - 4th grade at Winkler. All 4K students will be attending Dyer Elementary. BASD offers both half-day and full-day opportunities for 4K students.

Please take the time to read through the 2024-25 Winkler guide.

Burlington Area School District along with Winkler School are excited about being Compassionate, Committed and Comprehensive to ensure a wonderful experience for all of our students!

It is our honor and pleasure to welcome everyone to Winkler Elementary for the 2024-25 School Year! I am extremely proud to serve as the Principal of this amazing learning community! We are eager to meet all our students and start our new journey together!

Our staff is compassionate about all students and committed to help every child feel welcomed and safe in our learning community

We are committed to providing a comprehensive learning experience for all students that supports students' growth academically and socially.

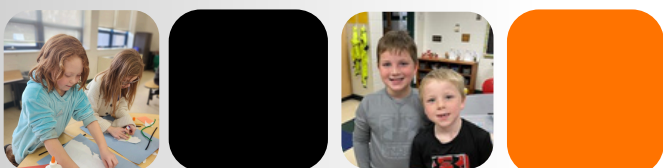
We are excited to start our journey together!

Sincerely,

Joel Graham
Serving as Principal, Winkler Elementary



***A message from
Principal***



Message from the Superintendent



District Families,

As we approach the end of another school year, I hope this letter finds you and your loved ones looking forward to the opportunities and adventures that lie with summer approaching. However, before we bid farewell to the current school year, I must address a matter of great importance regarding our school district's budget.

Despite our best efforts and the unwavering support of many in our community, we find ourselves in the unfortunate position of having to reduce our budget by \$5 million due to the failure of the operational referendum. This is not a decision we take lightly, as we fully understand the impact it may have on our students, families, and staff. However, we want to assure you that even in the face of these challenges, our dedication to providing an excellent education remains steadfast.

While the budget reduction will require adjustments, it will not compromise the quality of education your students receive within our school district. Here are some key points to emphasize:

- **Commitment to Academic Excellence:** Our educators are dedicated professionals who will continue to provide high-quality instruction that meets the academic needs of every student. We will maintain our focus on rigorous curriculum standards and innovative teaching practices to ensure your student(s) receives a top-notch education.
- **Preserving Essential Programs:** Despite financial constraints, we will prioritize essential programs and initiatives that directly benefit student learning and development. This includes maintaining core academic subjects, enrichment opportunities, and activities that contribute to a well-rounded education.
- **Fiscal Responsibility:** In light of the budget reduction, we will implement measures to maximize efficiency and ensure responsible stewardship of our resources. This involves streamlining operations and seeking cost-saving solutions wherever possible to minimize the impact on educational programs and services.

We recognize that overcoming budgetary challenges requires a collective effort. As we navigate this period of adjustment, we are committed to working hand-in-hand with our community. Your active participation is vital in shaping the path forward for our school district and community. Together, we can weather this storm and emerge stronger, united in our shared commitment to providing an exceptional education for every student.

The following page outlines adjustments we will need to make for the start of the 2024-2025 school year to balance our budget along with our strategic plans for 2024 through 2029.

Thank you for your continued partnership, understanding, and support as we continue to provide an exceptional education for all students within BASD.

Sincerely,

Dr. Jill Oelslager

2024-2025 District Changes



Budget Adjustments

As a system, we have to reduce our budget by \$5 million dollars moving into the 2024-2025 school year due to the failure of the February 2024 operational referendum.

Below are the larger adjustments the district will need to execute to balance our budget:



Closing of Lyons Center Elementary School

One way to reduce our expenses is to operate with fewer buildings. Therefore, the district/school board decided to close Lyons Elementary School for the start of the 2024-2025 school year.



Staffing

The closing of a school building allows the district to become more efficient with staffing. Therefore, BASD will be reducing staff by 40 + employees as we move into the 2024-2025 school year.



Grade Configuration & Redistricting

With the closing of a school building and reduction in staffing, the district took a look at our grade configuration and saw the opportunity to create a new grade configuration that will allow a more effective and efficient educational system for our students and families:

- 4K will be housed at Dyer Elementary School
- 5K - 4th grade at Dyer, Waller, and Winkler
- 5th - 8th grade at Karcher Middle School
- 9th - 12th grade at Burlington High School



Number of School Days Adjustment

As another cost-saving measure, the district/board has adjusted the school calendar with a start date of September 3rd and an end date of May 23rd. The new 2024-2025 school calendar is included in this guide and is located on our basd website.



Student Fees & Facility Use Fees

Additionally, to assist with expenses the district has to increase student and facility use fees. Therefore, there will be increases in fees for:

- Clubs, athletics, fine arts, and/or other extracurriculars
- School registration fees
- Outside user groups

Once the increases are finalized and approved by the school board, the district will communicate the changes with families and the community.

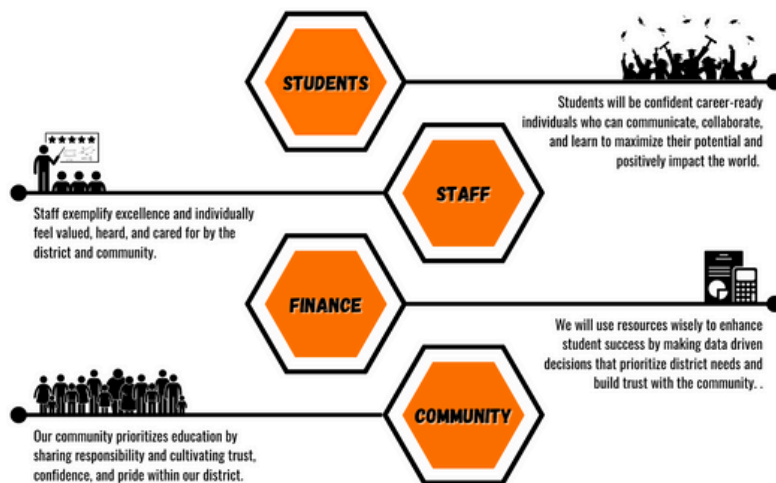
2024-2029 Strategic Plan

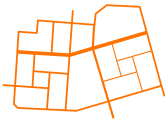
In January 2024 the school board approved the following strategic plan for 2024 through 2029.

The development of this strategic plan involved the engagement, recommendations, and opinions of students, parents, business owners, community members, and staff.

As the district progresses forward, specific strategies will be developed on a yearly basis to guide our work and achieve our goals.

To view the full strategic plan click [HERE](#).

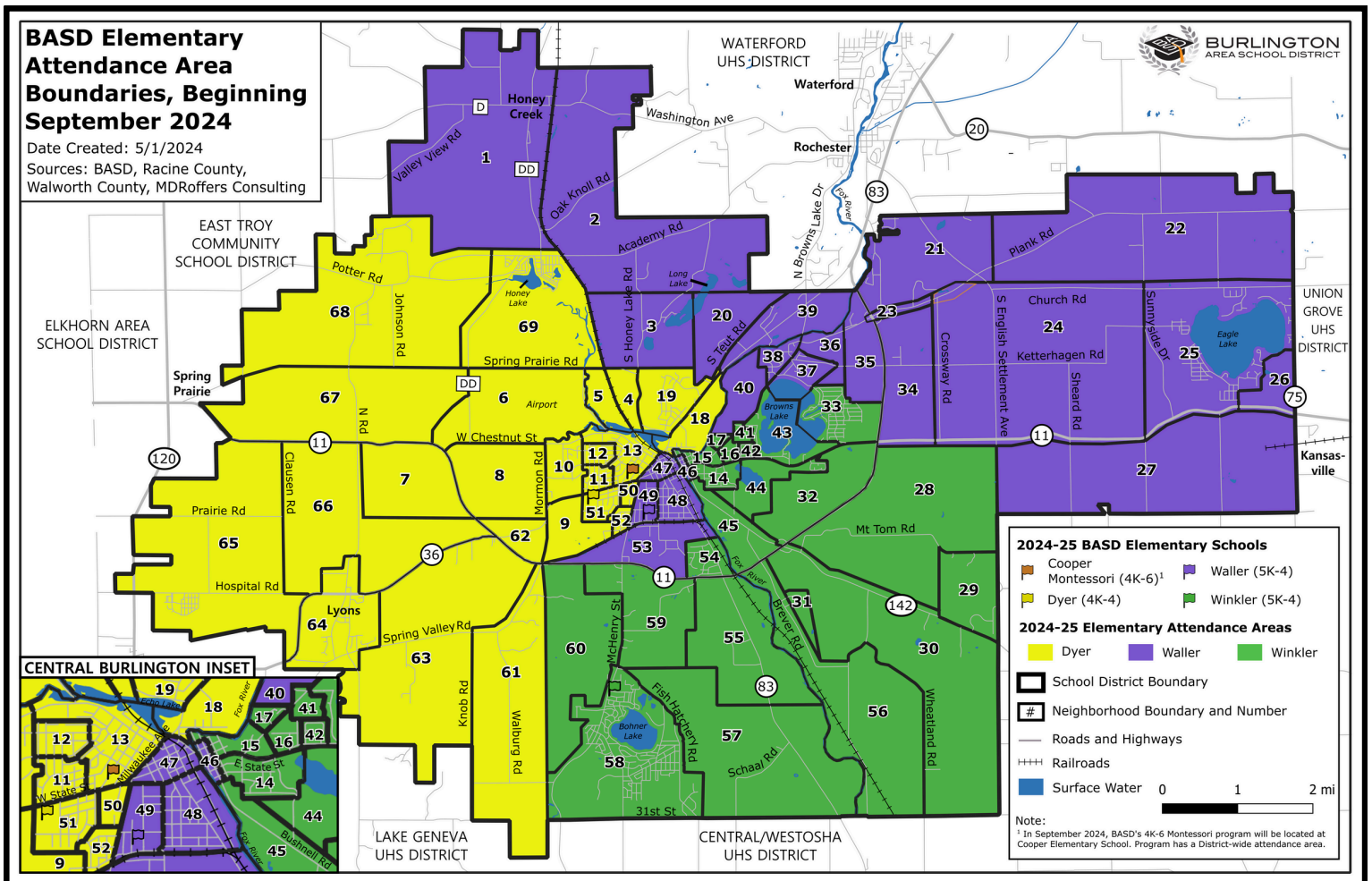




Redistricting

School district redistricting is the process of redrawing of the boundary lines and district maps related to school assignments for elementary students through 4th grade. With the closing of Lyons, and moving 5th grade to Karcher Middle School, redistricting was an essential need. Although the process of redistricting has occurred in our recent past, it is the districts goal and hope to maintain this plan for years to come.

Below is a map of Burlington neighborhoods and their school assignments. In the coming months, the address lookup application will be available on our BASD website for families who are unsure of their neighborhood school.



Grade Level Information



Winkler is excited to have Kindergarten through 4th grade for the 24-25 school year.

Winkler Elementary School strives to create the best learning environment for its students and a supportive environment for its staff and families. We approach teaching around the core concepts of best instructional practices, universal Access, and a positive learning culture.

Our classroom teachers for the 2024-25 school year welcome you to Winkler!



Mrs. Vojtisek
Mrs. Konz



Mrs. Dummer
Mrs. DeCheck



Mrs. Edmonds
Mrs. Kahle



Mrs. Riviere
Mrs. Middleton



Ms. Considine
Ms. Wiley-Deal

The Best Teachers



School Tours



WHEN CAN **NEW** FAMILIES COME SEE THE SCHOOL?

Families will have the chance to visit Winkler on Thursday, May 16th. This will give families the chance to meet staff members, see common areas, take a tour of the school and play on the playground.



Winkler Elementary School

DATE: May 16, 2024

Elementary Schools: 5:00 - 6:00 PM

Karcher Middle School: 6:00 - 7:00 PM

When will school start & end?



Winkler Elementary's daily schedule is **8:15 AM - 3:40 PM** with the doors opening at 8:00 am.

All BASD school's NEW start and end times can be found at www.basd.k12.wi.us or on the Family Calendar found on page 7.



Winkler School
Start time:
8:15 AM

Transportation



Parent Drop Off Procedures

- Drop-off starts at 8 am. Students should not exit vehicles until a staff member is present.
- Parents will use the circle drive in front of the school to drop off students. (see map below)
- A staff member will also welcome students as they enter the front door. Students will hang up their backpacks and head to the playground.
- NO cars are allowed in the bus lane on the south side of the building.

Parent Pick Up Procedures



- Pick-up starts at 3:40 pm.
- Parents should park along the front drive (see map below).
- Students should load the vehicle on the driver's side and buckle themselves.



Student Walker Procedures

- There are no sidewalks leading to Winkler School. Most students ride the bus or get rides from family, but if you live close and want to walk to school, please wait until the busses have left before walking on the road.

Students Riding the Bus



- Bus-riding students will be dropped off and picked up on the south of the building in the bus lane.
- **AM bus route for 4K students:**
 - 4K students with siblings in 5K-4th grade living in the Winkler attendance boundaries may **potentially** be picked up first and brought to Dyer Elementary School on their own bus. They would not be on the morning bus with their 5K-4th grade siblings. This is to avoid a lengthy bus ride for your 4K student(s). Thomas Bus is still looking into this to see if there are any adjustments to this transportation plan.
 - If you would prefer your 4K student(s) with their older siblings, please contact Thomas Bus to inform them of this request understanding that the bus ride will be longer. Otherwise, they will be riding with other 4K students from the Winkler area.
- **PM bus route:** The bus will transport all Winkler 4K students from Dyer, then go to Winkler and pick up all other Winkler students.
- Thomas Bus will email families by the end of July to indicate bus pick-up/drop-off times and locations.

Thomas Bus phone number: (262) 763-7564

Helpful Pick up/Drop off maps



SAFETY FIRST!!! ALL TRAFFIC LAWS MUST BE FOLLOWED. DO NOT pass cars on the right AND pay close attention to traffic signs and yield to oncoming traffic.

DROP OFF: Students should remain in their cars until 8:00 am when staff is present. School begins at 8:15.

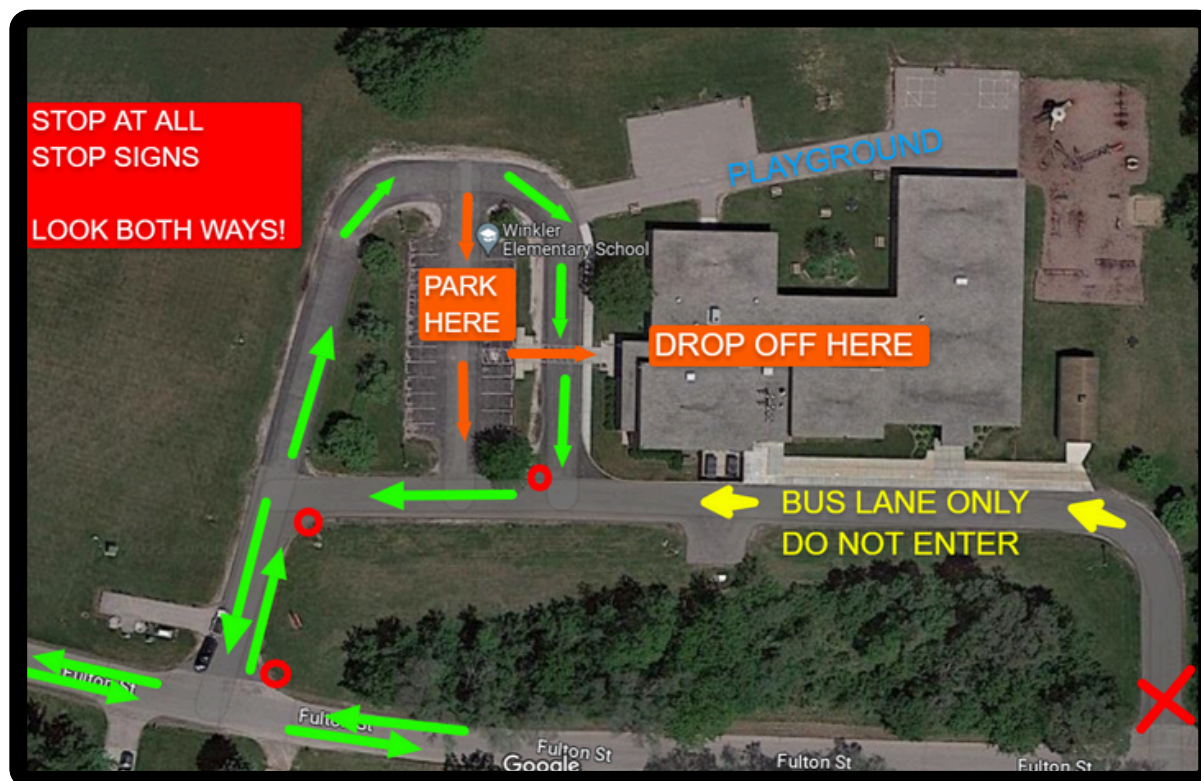
- Please pull around the drive, to the front doors to have your child get themselves out of the car.
- Students must exit the cars on the driver's side only, and enter the building through the front door. Staff will be present to greet students daily.
- If you must get out of your car to help your child unbuckle, you should park in the parking lot to keep traffic moving.
- Do not leave your car if you are in the drop-off or pick-up line.



PICK-UP: On the first day of school, students will bring home two signs with their names on them. Please display your sign on your windshield when picking up your child. Staff will see your sign and dismiss your child from the gym doors. Extra signs will be available upon request.

- Vehicles should line up along the circle drive and students will then be called to the vehicle from the gym. (We can usually fit 6 vehicles at a time near the sidewalk.)
- Staff will supervise the area and make sure students get into the driver's side of the correct vehicle.
- Arrive on time: Please be at school by 3:40 to pick up your child.
- If you need to help your child open the door and or buckle them in, please park in the parking lot to keep traffic moving.
- Consider practicing buckling and unbuckling this summer with little ones.

Winkler Drop-off/Pick-up Map



Wednesday Late Start Information



**Winkler School
Start time on
Wednesday Late
Start:
10:05 AM**

BASD will be utilizing Wednesday late starts during the 2024-2025 school year. There will be 17 late start Wednesdays throughout the school year which are indicated in "yellow" on the family school calendar (noted within this guide and on the BASD website). The start time for late starts at Winkler will be **10:05 am** with drop off starting a **9:55 am**.

THE WHY?

- Due to the failed referendum, BASD needs to make cost-saving adjustments within our calendar. This results in 10 fewer school days per year.
- By adding late starts to our calendar, we are able to provide mandatory trainings and professional development to our staff, while not adding additional days to the calendar.

Wednesday Innovation Camp



BASD is offering families the ability to register for Innovation Camp to support those who may need childcare during the 17 late start Wednesdays.

During this time, students will engage in exciting project-based activities around science, technology, engineering, and art!

TIME: Wednesday Innovation Camp will start at 7:45 AM and run until 9:45 AM. Parents can drop off anytime between 6:00AM - 7:30AM.

LOCATION: Information on the location(s) will be provided in August as it will be dependent on student sign up.

TRANSPORTATION: If your student attends a different school than the location for innovation camp they will be transported by bus. to their normal school by 9:45am.

COST: \$20 per student, per Wednesday morning

SIGN UP HERE

1. Log in to your **Skyward Family Access**
2. Use Online Form: **NEW! Wednesday Innovation Camp Registration**

If you already registered for before school care on Wednesdays we will add \$10 so your student is able to participate in the Innovation Camp! Those who register for the daily before care option are able to drop off starting at 6:00 AM. Innovation Camp will start at 7:45 AM.

Question 1: Is there still Burlington BAC (Before & After Care) on late start Wednesdays?

- Yes, Burlington BAC will be offered on late start Wednesdays.
- Please drop off your student to their BAC location between 6:00 AM - 7:30 AM.

Question 2: What time can I drop my students off for Wednesday Innovation Camp?

- If your student is only attending Wednesday innovation camp, please drop off between 7:30-7:45 AM/
- If your student is participating in Burlington BAC, please drop them off at their BAC location between 6:00 AM and 7:30.. A bus will drop them off at Wednesday Innovation Camp 7:45 AM.

Question 3: Can my student be bussed directly to Wednesday Innovation Camp from my home?

- No, there is no bussing to Wednesday Innovation Camp. Parents will need to drop their students off at Innovation Camp by 7:45 AM. Normal bus routes will run approximately 2 hours later than normal pick-up times for the start of the school day. *Thomas bus will be sharing specific pick-up times by the end of July.*

Burlington BAC (Before & After Care)



As BASD moves into the 2024-25 school year, we are excited to offer **Before and After Care**. The location for Winkler students will be determined and communicated in August.

BAC Offers a Variety of Choices:

- Gym activities - ball sports, hula hoop, jump rope, etc.
- Card games & board games
- Large group games
- Arts and crafts activities
- Outdoor play
- Free play



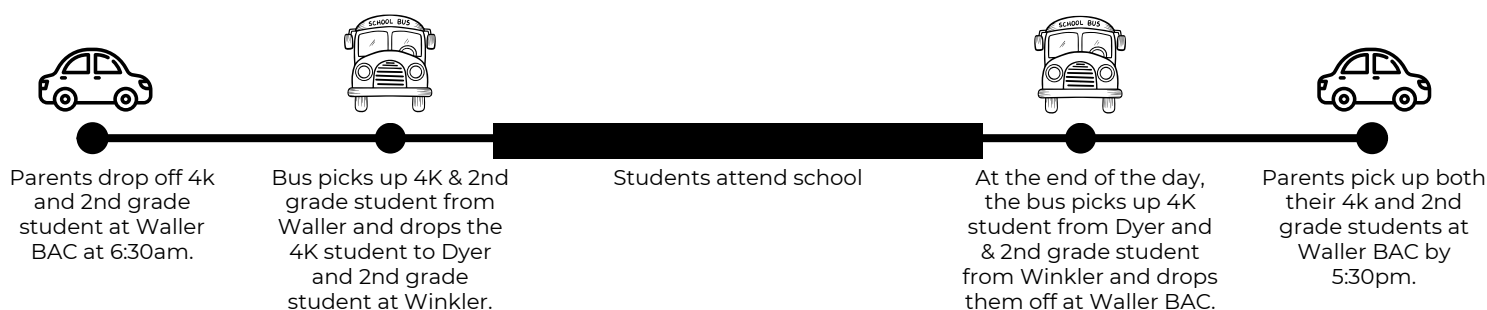
6:00 AM-School Start cost: \$10 per day
End of School - 5:30 PM cost: \$12 per day
\$22 per day if needing before and after care per day.

REGISTER HERE

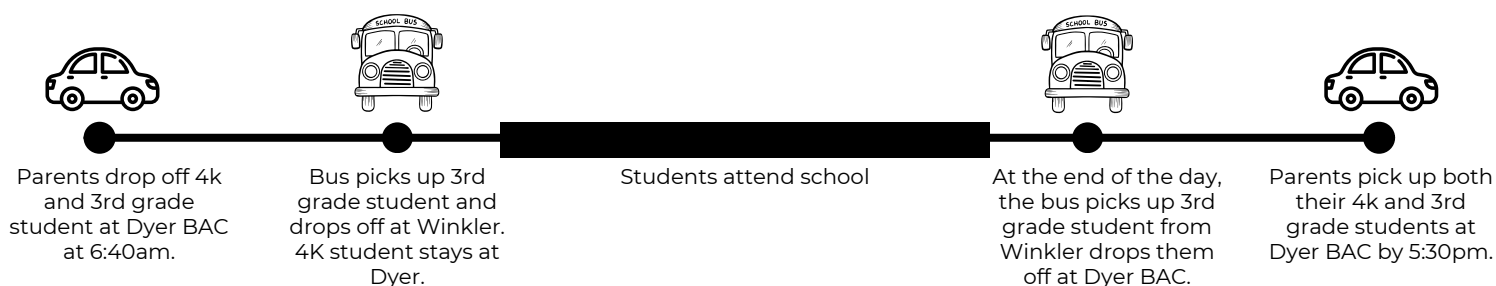
Burlington BAC Transportation

- Families that sign up for Burlington BAC will be assigned to one school to attend BAC.
- Even if siblings attend different schools during the school day, they will attend the same BAC location together.
- Families will be able to drop off and pick up all siblings at the same location.
- Below are two examples. **PLEASE NOTE: Locations and BAC assignments will be based on student enrollment and will be assigned to families in August.**

Example 1: I have one 4K student who attends 4K at Dyer, and one 2nd grader who attends school at Winkler. I have been assigned to Waller for Burlington BAC.



Example 2: I have one 4K student who attends 4K at Dyer, and one 3rd grader who attends school at Winkler. I have been assigned to Dyer for Burlington BAC.



FAMILY CALENDAR 2024-2025

JULY 2024						
S	M	T	W	TH	F	S
	1	2	3	4	5	6
7	8	9	10	11	12	13
14	15	16	17	18	19	20
21	22	23	24	25	26	27
28	29	30	31			

AUGUST 2024						
S	M	T	W	TH	F	S
				1	2	3
4	5	6	7	8	9	10
11	12	13	14	15	16	17
18	19	20	21	22	23	24
25	26	27	28	29	30	31

SEPTEMBER 2024						
S	M	T	W	TH	F	S
1	NA	3**	4	5	6	7
8	9	10	11	12	13	14
15	16	17	18	19	20	21
22	23	24	25	26	27	28
29	30					

OCTOBER 2024						
S	M	T	W	TH	F	S
		1	2	3	4	5
6	7	8	9	10	11	12
13	14	15	16	17	18	19
20	21	22	23	24	NA	26
27	28	29	30	31		

NOVEMBER 2024						
S	M	T	W	TH	F	S
					1	2
3	4	5	6	7	8	9
10	11	12	13	14	15	16
17	(18)	19	20	21	22	23
24	25	26	NA	NA	NA	30

DECEMBER 2024						
S	M	T	W	TH	F	S
1	2	3	4	5	6	7
8	9	10	11	12	13	14
15	16	17	18	19	20	21
22	NA	NA	NA	NA	NA	28
29	NA	NA				

JANUARY 2025						
S	M	T	W	TH	F	S
	NA	NA	NA	NA	NA	4
5	6	7	8	9	10	11
12	13	14	15*	16	17	18
19	NA	21	22	23	24	25
26	27	28	29	30	31	

FEBRUARY 2025						
S	M	T	W	TH	F	S
						1
2	3	4	5	6	7	8
9	10	11	12	13	14	15
16	17	18	19	20	21	22
23	23	25	26	27	NA	

MARCH 2025						
S	M	T	W	TH	F	S
						1
2	3	4	5	6	7	8
9	10	11	12	13	14	15
16	17	18	19	20	(21)	22
23	NA	NA	NA	NA	NA	29
30	31					

APRIL 2024						
S	M	T	W	TH	F	S
		1	2	3	4	5
6	7	8	9	10	11	12
13	14	15	16	17	NA	19
20	21	22	23	24	25	26
27	28	29	30			

MAY 2025						
S	M	T	W	TH	F	S
				1	2	3
4	5	6	7	8	9	10
11	12	13	14	15	16	17
18	19	20	21	22	23**	24
25	NA	27	28	29	30	31

JUNE 2025						
S	M	T	W	TH	F	S
1	2	3	4	5	6	7
8	9	10	11	12	13	14
15	16	17	18	19	20	21
22	23	24	25	26	27	28
29	30					

- Sept. 2 Holiday/Labor Day
- Sept. 3-6 4K/ 5K Staggered
- Sept. 3 1st Day for 1-4, 5, 7, 9
(no school for 6, 8, 10-12)
- Sept. 4 1st Day Grades 6, 8, 10-12
(no school for 5, 7)
- Sept. 11 Late Start (Mandatory Staff Training)
- Sept. 25 Late Start (Mandatory Staff Training)
- Oct. 9 Late Start (Mandatory Staff Training)
- Oct. 23 Late Start (Mandatory Staff Training)
- Oct. 25 Day of Non-attendance
- Nov. 6 Late Start (Mandatory Staff Training)
- Nov. 18 End of Trimester 1 (PreK-8)
- Nov. 20 Late Start (Mandatory Staff Training)
- Nov. 27-29 Days of Non-attendance
- Dec. 4 Late Start (Mandatory Staff Training)
- Dec. 18 Late Start (Mandatory Staff Training)
- Dec. 23-Jan. 3 Winter Break
- Jan. 6 School resumes
- Jan. 15 Late Start, End of Semester 9-12
(Mandatory Staff Training)
- Jan. 20 Day of Non-attendance MLK Jr.
- Jan. 29 Late Start (Mandatory Staff Training)
- Feb. 12 Late Start (Mandatory Staff Training)
- Feb. 26 Late Start (Mandatory Staff Training)
- Feb. 28 Day of Student non-attendance
(Mandatory Staff Training)
- Mar. 12 Late Start (Mandatory Staff Training)
- Mar. 21 End of Trimester 2 (PreK-8)
- Mar. 24-28 Spring Break
- April 2 Late Start (Mandatory Staff Training)
- April 16 Late Start (Mandatory Staff Training)
- April 18 Day of Non-attendance
- April 30 Late Start (Mandatory Staff Training)
- May 14 Late Start (Mandatory Staff Training)
- May 23 Last Day of School
-End of Trimester 3 (PreK-8) & Sem. 2 (9-12)

LEGEND	
**	First Day / Last Day of School
	Late Start (Mandatory Staff Training)
()	End of Trimester (PreK-8)
*	End of Semester (9-12)
NA	Day of Non-Attendance

- Start / End Times:**
- BHS 7:15-2:47 Late Starts 8:50-2:47
 - Karcher 7:15-2:47 Late Starts 8:50-2:47
 - Cooper 8:05-3:30 Late Starts 9:55-3:30
 - Dyer 7:55-3:20 Late Starts 9:45-3:20
 - Waller 8:05-3:30 Late Starts 9:55-3:30
 - Winkler 8:15-3:40 Late Starts 10:05-3:40

Back to School Open House



**AUGUST
28TH**

4K: 4:00 PM - 5:30 PM @ Dyer Elementary School
Cooper Montessori: 5:30 PM - 6:30 PM
Elementary Schools: 5:30 PM - 6:30 PM
Karcher Middle School: 6:30 PM- 7:30 PM
Burlington High School: 5:30 PM - 6:30 PM

Winkler Open House is a time when parents and students can find classrooms, drop off important school supplies, and meet and greet not only school staff but also classmates and their families. This is a wonderful way to start our school year. Your Winkler PTO will be present so that families may be immediately connected with one of the most positive supports we have at Winkler.
Be sure to attend this very important night!

PTO Information

PTO stands for Parent-Teacher Organization, consisting of parents and teachers working together to support and enrich all students. The BASD PTO support school staff and assist in efforts to solve school needs through volunteering and funding.

Contact:

Candace Black - cmblack0922@gmail.com
Amanda Kowalski - sheardam06@yahoo.com

Visit us on Facebook @ Winkler Elementary PTO



Contact Information



Joel Graham
WINKLER ELEMENTARY
PRINCIPAL
262-539-2726



Cory Busch
WINKLER ELEMENTARY
SECRETARY/HEALTH AIDE
262-539-2726



Frequently Asked Questions



How does breakfast and lunch work?



All Winkler Elementary students are offered breakfast and may purchase a lunch or bring their own if they wish. Breakfast is served as soon as students enter the building. Lunch is served between 11:30 and 12:30 with 3 lunch periods during the day. Each lunch period is 30 minutes long. Students also enjoy a 30-minute recess either before or after lunch. Breakfast, lunch, and recess are all supervised by our school staff.

Some students can qualify for free/reduced lunch. Please be sure to complete the application through Skyward during registration in August.

Who and/or how should I contact the school for pick up early/late to school?

If students have a change in after-school transportation, are being picked up early, or will arrive at school late we ask the following:

- Please call the school and relay the message (262-539-2726)
- Email Mrs. Busch @ cbusch@basd.k12.wi.us and let her know about the change.
- All students must check-in/out at the office.



What do we need to know about the weather and recess?



Our students go outside for fresh air most days. Wisconsin weather is extremely variable and can also change quite drastically in a short amount of time. Students will remain inside for recess only if it's raining or the wind chill is below 0. The best way to be prepared for Wisconsin weather is to watch the daily forecast and dress accordingly with layers. The playground can also get muddy so boots or a change of shoes is also helpful.

[Click here: When Do I Have To Wear A Coat?](#)

How do students use technology in the classroom?

- Students are issued **Chromebooks** to navigate their daily work. Students in elementary schools do not typically need to take their Chromebooks home. If you happen to see a Chromebook come home, please make sure you communicate with the classroom teacher and return it the next day.
- **Cell phones** should be left at home, If parents insist on sending one, they must be turned off and remain in their backpacks. Cellphone use is prohibited at the elementary schools.

