



BURLINGTON AREA SCHOOL DISTRICT

A great place to learn. A great place to work. Serving a great community.

TABLE OF CONTENTS

2024-2025 School Year

- Message from the Superintendent 2
- 2024-25 District Changes & BASD Strategic Plan..... 3
- Redistricting 4
- Grade Level Information5
- School Tours 5
- School Start & End Times6
- Transportation6
- Pick up / Drop off Maps 7
- Wednesday Late Start & Camp Innovation Information 8
- Burlington BAC (Before & After Care) 9
- 2024-25 Calendar 10
- Back to School Open House 11
- PTO Information.....11
- Contact Us..... 11
- Frequently Asked Questions ... 12

Welcome to Waller Elementary!

We are excited for your student(s) to continue with us and/or join the Waller family within the BASD community!

For the 2024-2025 school year, we will have 5K - 4th grade at Waller. All 4k students will be attending Dyer Elementary school. BASD offers both half-day and full-day opportunities for 4K students.

Please take the time to read through the 2024-25 Waller Elementary guide.

Burlington Area School District along with Waller School are excited about being **Compassionate, Committed and Comprehensive** to ensure a wonderful experience for all of our students!

At Waller we foster a **compassionate** environment where students support each other's growth and well-being with empathy and kindness.

Waller staff is **committed** to cultivating a nurturing environment where every child can flourish academically and socially.

Finally, we at Waller provides a **comprehensive** education program that supports students' academic, social, and emotional development

I am truly honored to be a part of the Waller family and am very proud of the education and experience our staff provides our students everyday.

A message from the Principal



Message from the Superintendent



District Families,

As we approach the end of another school year, I hope this letter finds you and your loved ones looking forward to the opportunities and adventures that lie with summer approaching. However, before we bid farewell to the current school year, I must address a matter of great importance regarding our school district's budget.

Despite our best efforts and the unwavering support of many in our community, we find ourselves in the unfortunate position of having to reduce our budget by \$5 million due to the failure of the operational referendum. This is not a decision we take lightly, as we fully understand the impact it may have on our students, families, and staff. However, we want to assure you that even in the face of these challenges, our dedication to providing an excellent education remains steadfast.

While the budget reduction will require adjustments, it will not compromise the quality of education your students receive within our school district. Here are some key points to emphasize:

- **Commitment to Academic Excellence:** Our educators are dedicated professionals who will continue to provide high-quality instruction that meets the academic needs of every student. We will maintain our focus on rigorous curriculum standards and innovative teaching practices to ensure your student(s) receives a top-notch education.
- **Preserving Essential Programs:** Despite financial constraints, we will prioritize essential programs and initiatives that directly benefit student learning and development. This includes maintaining core academic subjects, enrichment opportunities, and activities that contribute to a well-rounded education.
- **Fiscal Responsibility:** In light of the budget reduction, we will implement measures to maximize efficiency and ensure responsible stewardship of our resources. This involves streamlining operations and seeking cost-saving solutions wherever possible to minimize the impact on educational programs and services.

We recognize that overcoming budgetary challenges requires a collective effort. As we navigate this period of adjustment, we are committed to working hand-in-hand with our community. Your active participation is vital in shaping the path forward for our school district and community. Together, we can weather this storm and emerge stronger, united in our shared commitment to providing an exceptional education for every student.

The following page outlines adjustments we will need to make for the start of the 2024-2025 school year to balance our budget along with our strategic plans for 2024 through 2029.

Thank you for your continued partnership, understanding, and support as we continue to provide an exceptional education for all students within BASD.

Sincerely,

Dr. Jill Oelslager

2024-2025 District Changes



Budget Adjustments

As a system we have to reduce our budget by \$5 million dollars as we move into the 2024-2025 school year due to the failure of the February 2024 operational referendum.

Below are the larger adjustments the district will need to execute to balance our budget:



Closing of Lyons Center Elementary School

One way to reduce our expenses is to operate with less buildings. Therefore, the district/school board decided to close Lyons Elementary School for the start of the 2024-2025 school year.



Staffing

The closing of a school building allows the district to become more efficient with staffing. Therefore, BASD will be reducing staff by 40 + employees as we move into the 2024-2025 school year.



Grade Configuration & Redistricting

With the closing of a school building and reduction in staffing the district took a look at our grade configuration and saw the opportunity to create a new grade configuration that will allow a more effective and efficient educational system for our students and families:

- 4K will be housed at Dyer Elementary School
- 5K - 4th grade at Dyer, Waller, and Winkler
- 5th - 8th grade at Karcher Middle School
- 9th - 12th grade at Burlington High School



Number of School Days Adjustment

As another cost-saving measure the district/board has adjusted the school calendar with a start date of September 3 and end date of May 23. The new 2024-2025 school calendar is included within this guide and is located on our basd website.



Student Fees & Facility Use Fees

Additionally, to assist with expenses the district has to increase student and facility use fees. Therefore, there will be increases in fees for:

- Clubs, athletics, fine arts, and/or other extracurriculars
- Beginning of the year registration fees
- Outside user groups

Once the increases are finalized and approved by the school board the district will communicate the changes with families and the community.

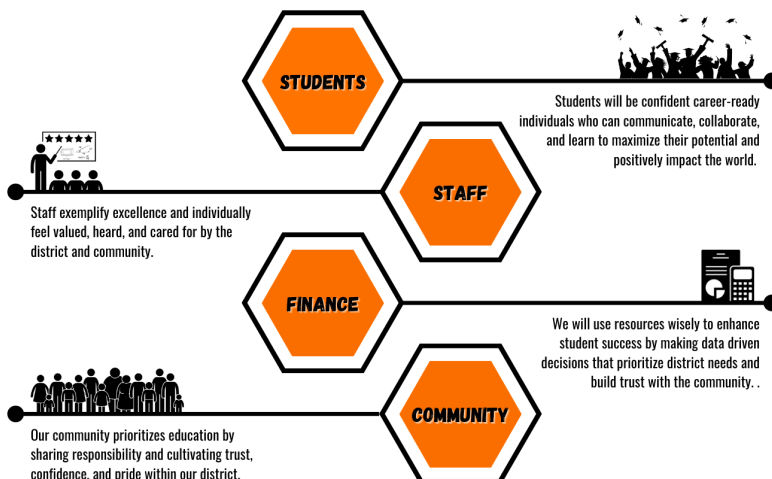
2024-2029 Strategic Plan

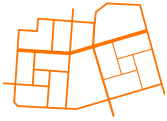
In January 2024 the school board approved the following strategic plan for 2024 through 2029.

The development of this strategic plan involved the engagement, recommendations, and opinions of students, parents, business owners, community members, and staff.

As the district progresses forward, specific strategies will be developed on a yearly basis to guide our work and achieve our goals.

To view the full strategic plan click [HERE](#).

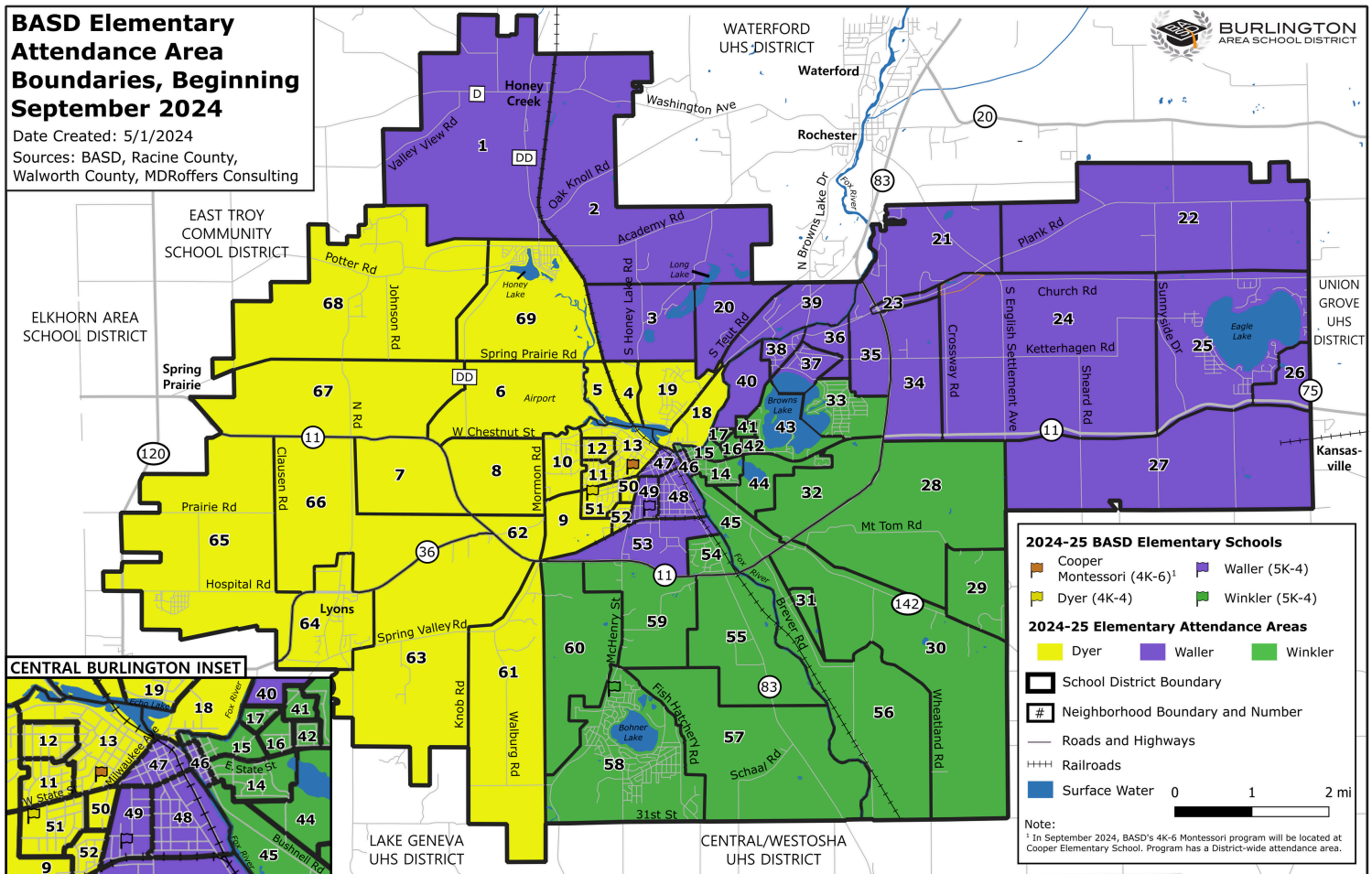




Redistricting

School district redistricting is the process of redrawing of the boundary lines and district maps related to school assignments. With the closing of Lyons, and moving 5th grade to Karcher Middle School, redistricting was an essential need. Although the process of redistricting has occurred in our recent past, it is the districts goal to maintain this plan for years to come.

Below is a map of Burlington neighborhoods and their school assignments. You may also use the app online to input your home address to learn what school your child is assigned to. This app will be available summer 2024.



Grade Level Information



As shared, Dyer is excited to have all our BASD's 4K students, as well as Kindergarten through 4th grade.

Below is our Waller teaching staff for the 2024-25 school year!

The Best Teachers



Mrs. Halvorsen
Mrs. Biggin



Mrs. Schue
Mrs. Cates



Mrs. Bies
Mrs. Nevin



Mrs. Rouse
Mrs. Dickinson



Mrs. Koeppen
Ms. Crowley



School Tours

WHEN CAN **NEW** FAMILIES COME SEE THE SCHOOL?

Families will have the chance to visit Waller Elementary School before summer break. This gives families the chance to meet Ms. Phillips (principal), other staff members, see common areas, and take a tour of the school.



Waller Elementary School

DATE: May 16, 2024

Waller Elementary: 5:00 - 6:00 PM

Karcher Middle School: 6:00 - 7:00 PM

When will school start & end?



Waller Elementary School's daily schedule is from **8:05 AM -3:30 PM.**

All BASD schools start and end times can be accessed at www.basd.k12.wi.us or on the Family Calendar on page 7.



**Waller School
Start time:
8:05 AM**

Transportation



Parent Drop Off Procedures

For students that arrive by car, parents are welcome to drive into the parking lot thru the "Drop Off Zone". When you arrive to the front of the car drop off line, your child will exit your car on the passenger side. We ask that the kids are ready to get out as you pull up so that we can keep the line moving in a continuous manner. There will be a staff member in the area to assist the students if needed.

Students are able to be dropped off to come into the building at 7:45 AM. If students arrive prior to 7:45 AM, they will have to wait outside, as there is no supervision available until then.

Parent Pick Up Procedures



This will work similar to drop off, only the students will be waiting for parents to pull up to the front of the line, and then they will get into the car on the passenger side again to go home. The pick up line can be lengthy at 3:15 PM, but it moves quickly once the kids start entering their cars!

Parents, please do not get out of your car at drop off or pick up time, as you go through this zone. If you would like to walk your child to a door, or talk to someone during pickup time, please feel free to park your car in a parking spot in the parking lot - there are always extra spaces!



Student Walker Procedures

Walkers will enter the middle set of doors on the playground / parking lot side of school as they arrive. Students are able to come into the building at 7:45 AM. If students arrive prior to 7:45 AM, they will have to wait outside, as there is no supervision available until then.

Students Riding the Bus



AM ARRIVAL

- Buses will arrive at Waller, and students will walk from the Randolph Street sidewalk, down the ramp, into the school doors. Adult supervision will be on hand. Walkers and car riders will enter the middle set of doors on the playground / parking lot side of school as they arrive.
- Thomas Bus will be emailing families the the end of July to indicate bus pick-up and drop-off times.

Thomas Bus phone number: (262) 763-7564

Helpful pick up / drop off maps



IMPORTANT NOTE: ONLY RIGHT HAND TURNS ARE PERMITTED INTO THE PARKING LOT BEFORE AND AFTER SCHOOL



Wednesday Late Start Information



BASD will be utilizing Wednesday late starts during the 2024-2025 school year. There will be 17 late start Wednesdays throughout the school year which are indicated in "yellow" on the family school calendar (noted within this guide and on the BASD website). The start time for late stars at Waller is **9:55 AM** with drop off at **9:45 AM**.



Waller School Start
time on Wednesday
Late Start:
9:55 AM

THE WHY?

- Due to the failed referendum, BASD needs to make cost-saving adjustments within our calendar. This results in 10 fewer school days per year.
- By adding late starts to our calendar, we are able to provide mandatory trainings and professional development to our staff, while not adding additional days to the calendar.

Wednesday Innovation Camp



BASD is offering families the ability to register for Innovation Camp to support those who may need childcare during the 17 late start Wednesdays.

During this time, students will engage in exciting project-based activities around science, technology, engineering, and art!

TIME: Wednesday Innovation Camp will start at 7:45 AM and run until 9:45 AM. Parents can drop off anytime between 6:00AM - 7:30AM.

LOCATION: Information on the location(s) will be provided in August as it will be dependent on student sign up.

TRANSPORTATION: If your student attends a different school than the location for innovation camp they will be transported by bus. to their normal school by 9:45am.

COST: \$20 per student, per Wednesday morning

SIGN UP HERE

1. Log in to your **Skyward Family Access**
2. Use Online Form: **NEW! Wednesday Innovation Camp Registration**



If you already registered for before school care on Wednesdays we will add \$10 so your student is able to participate in the Innovation Camp! Those who register for the daily before care option are able to drop off starting at 6:00 AM. Innovation Camp will start at 7:45 AM.

Question 1: Is there still Burlington BAC (Before & After Care) on late start Wednesdays?

- Yes, Burlington BAC will be offered on late start Wednesdays.
- Please drop off your student to their BAC location between 6:00 AM - 7:30 AM.

Question 2: What time can I drop my students off for Wednesday Innovation Camp?

- If your student is only attending Wednesday innovation camp, please drop off between 7:30-7:45 AM/
- If your student is participating in Burlington BAC, please drop them off at their BAC location between 6:00 AM and 7:30.. A bus will drop them off at Wednesday Innovation Camp 7:45 AM.

Question 3: Can my student be bussed directly to Wednesday Innovation Camp from my home?

- No, there is no bussing to Wednesday Innovation Camp. Parents will need to drop their students off at Innovation Camp by 7:45 AM. Normal bus routes will run approximately 2 hours later than normal pick-up times for the start of the school day. *Thomas bus will be sharing specific pick-up times by the end of July.*

Burlington BAC (Before & After Care)



As BASD moves into the 2024-25 school year, we are excited to offer BAC. The location will be determined and communicated in August.

BAC Offers a Variety of Choices:

- Gym activities - ball sports, hula hoop, jump rope, etc.
- Card games & board games
- Large group games
- Arts and crafts activities
- Outdoor play
- Free play



6:00 AM-School Start cost: \$10 per day
End of School - 5:30 PM cost: \$12 per day
\$22 per day if needing before and after care per day.

REGISTER HERE

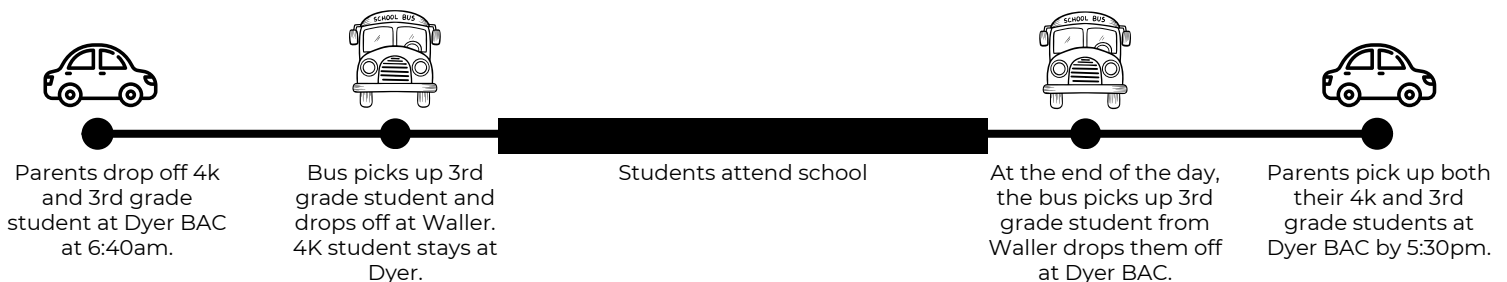
Burlington BAC Transportation

- Families that sign up for Burlington BAC will be assigned to one school to attend BAC.
- Even if siblings attend different schools during the school day, they will attend the same BAC location together.
- Families will be able to drop off and pick up all siblings at the same, one location.
- Below are two examples. **PLEASE NOTE: Locations and BAC assignments will be based on student enrollment and will be assigned to families in August.**

Example 1: I have one 4K student who attends 4K at Dyer, and one 2nd grader who attends school at Waller. I have been assigned to Waller for Burlington BAC.



Example 2: I have one 4K student who attends 4K at Dyer, and one 3rd grader who attends school at Waller. I have been assigned to Dyer for Burlington BAC.





BURLINGTON AREA SCHOOL DISTRICT

209 WAINWRIGHT AVENUE, BURLINGTON, WI 53105

(262) 763-0210

BASD.K12.WI.US

FAMILY CALENDAR 2024-2025

JULY 2024						
S	M	T	W	TH	F	S
	1	2	3	4	5	6
7	8	9	10	11	12	13
14	15	16	17	18	19	20
21	22	23	24	25	26	27
28	29	30	31			

JANUARY 2025						
S	M	T	W	TH	F	S
	NA	NA	NA	NA	NA	4
5	6	7	8	9	10	11
12	13	14	15*	16	17	18
19	NA	21	22	23	24	25
26	27	28	29	30	31	

AUGUST 2024						
S	M	T	W	TH	F	S
				1	2	3
4	5	6	7	8	9	10
11	12	13	14	15	16	17
18	19	20	21	22	23	24
25	26	27	28	29	30	31

FEBRUARY 2025						
S	M	T	W	TH	F	S
						1
2	3	4	5	6	7	8
9	10	11	12	13	14	15
16	17	18	19	20	21	22
23	23	25	26	27	NA	

SEPTEMBER 2024						
S	M	T	W	TH	F	S
1	NA	3**	4	5	6	7
8	9	10	11	12	13	14
15	16	17	18	19	20	21
22	23	24	25	26	27	28
29	30					

MARCH 2025						
S	M	T	W	TH	F	S
						1
2	3	4	5	6	7	8
9	10	11	12	13	14	15
16	17	18	19	20	(21)	22
23	NA	NA	NA	NA	NA	29
30	31					

OCTOBER 2024						
S	M	T	W	TH	F	S
		1	2	3	4	5
6	7	8	9	10	11	12
13	14	15	16	17	18	19
20	21	22	23	24	NA	26
27	28	29	30	31		

APRIL 2024						
S	M	T	W	TH	F	S
		1	2	3	4	5
6	7	8	9	10	11	12
13	14	15	16	17	NA	19
20	21	22	23	24	25	26
27	28	29	30			

NOVEMBER 2024						
S	M	T	W	TH	F	S
					1	2
3	4	5	6	7	8	9
10	11	12	13	14	15	16
17	(18)	19	20	21	22	23
24	25	26	NA	NA	NA	30

MAY 2025						
S	M	T	W	TH	F	S
				1	2	3
4	5	6	7	8	9	10
11	12	13	14	15	16	17
18	19	20	21	22	23**	24
25	NA	27	28	29	30	31

DECEMBER 2024						
S	M	T	W	TH	F	S
1	2	3	4	5	6	7
8	9	10	11	12	13	14
15	16	17	18	19	20	21
22	NA	NA	NA	NA	NA	28
29	NA	NA				

JUNE 2025						
S	M	T	W	TH	F	S
1	2	3	4	5	6	7
8	9	10	11	12	13	14
15	16	17	18	19	20	21
22	23	24	25	26	27	28
29	30					

- Sept. 2 Holiday/Labor Day
- Sept. 3-6 4K/ 5K Staggered
- Sept. 3 1st Day for 1-4, 5, 7, 9
(no school for 6, 8, 10-12)
- Sept. 4 1st Day Grades 6, 8, 10-12
(no school for 5, 7)
- Sept. 11 Late Start (Mandatory Staff Training)
- Sept. 25 Late Start (Mandatory Staff Training)
- Oct. 9 Late Start (Mandatory Staff Training)
- Oct. 23 Late Start (Mandatory Staff Training)
- Oct. 25 Day of Non-attendance
- Nov. 6 Late Start (Mandatory Staff Training)
- Nov. 18 End of Trimester 1 (PreK-8)
- Nov. 20 Late Start (Mandatory Staff Training)
- Nov. 27-29 Days of Non-attendance
- Dec. 4 Late Start (Mandatory Staff Training)
- Dec. 18 Late Start (Mandatory Staff Training)
- Dec. 23-Jan. 3 Winter Break
- Jan. 6 School resumes
- Jan. 15 Late Start, End of Semester 9-12
(Mandatory Staff Training)
- Jan. 20 Day of Non-attendance MLK Jr.
- Jan. 29 Late Start (Mandatory Staff Training)
- Feb. 12 Late Start (Mandatory Staff Training)
- Feb. 26 Late Start (Mandatory Staff Training)
- Feb. 28 Day of Student non-attendance
(Mandatory Staff Training)
- Mar. 12 Late Start (Mandatory Staff Training)
- Mar. 21 End of Trimester 2 (PreK-8)
- Mar. 24-28 Spring Break
- April 2 Late Start (Mandatory Staff Training)
- April 16 Late Start (Mandatory Staff Training)
- April 18 Day of Non-attendance
- April 30 Late Start (Mandatory Staff Training)
- May 14 Late Start (Mandatory Staff Training)
- May 23 Last Day of School
-End of Trimester 3 (PreK-8) & Sem. 2 (9-12)

LEGEND	
**	First Day / Last Day of School
	Late Start (Mandatory Staff Training)
()	End of Trimester (PreK-8)
*	End of Semester (9-12)
NA	Day of Non-Attendance

Start / End Times:		
BHS	7:15-2:47	Late Starts 8:50-2:47
Karcher	7:15-2:47	Late Starts 8:50-2:47
Cooper	8:05-3:30	Late Starts 9:55-3:30
Dyer	7:55-3:20	Late Starts 9:45-3:20
Waller	8:05-3:30	Late Starts 9:55-3:30
Winkler	8:15-3:40	Late Starts 10:05-3:40

PreK-4 (T1: 56 T2: 55 T3: 56) 9-12 (S1: 84 S2: 83)
Total Student Days: 167
 Updated: April 1, 2024

Back to School Open House



4K: 4:00 PM - 5:30 PM @ Dyer Elementary School
Cooper Montessori: 5:30 PM - 6:30 PM
Elementary Schools: 5:30 PM - 6:30 PM
Karcher Middle School: 6:30 PM- 7:30 PM
Burlington High School: 5:30 PM - 6:30 PM

**AUGUST
28TH**

Waller Open House is a time where parents and students can find classrooms, drop off important school supplies and meet and greet not only school staff but also classmates and their families. This is a wonderful way to start our school year. Your Waller PTO will be present so that families may be immediately connected with one of our most positive supports we have at Waller. Be sure to attend this very important night!

PTO Information

PTO stands for Parent-Teacher Organization, consisting of parents and teachers working together to support and enrich all students. The BASD PTOs support school staff and assist in efforts to solve school needs through volunteering and funding.

Waller PTO offers a great opportunity for parents and family members of Waller students, and teachers and staff, to join in the fun of planning and volunteering in activities throughout the school year to continue to foster pride and community within our wonderful school. Please support our Waller students and staff by helping out our PTO!

Please join our Facebook Page! [Waller PTO](#)



Contact Information



Ann Phillips
WALLER ELEMENTARY
PRINCIPAL
262-763-0185 *2003



Vicki Behling
WALLER ELEMENTARY
SECRETARY
262-763-0185



Frequently Asked Questions



How does breakfast and lunch work?



All Waller Elementary students are able to have breakfast and all students are able to purchase a lunch if they wish. Breakfast is served and eaten as soon as students enter the building. Lunch is served on a rotating basis with 2 lunch periods during the day. Each lunch period is 30 minutes long as well as a 30 minute recess. Breakfast, lunch and recess are all supervised by our school staff.

Who and/or how should I contact the school for pick up early/late to school?

If students are being picked up early or are coming to school late we ask the following to occur. Please call school at 262-763-0185 and connect with attendance and or our health office and either speak with or leave a message regarding the pick up or late drop off.

If dropping off late, we ask all parents and or guardians to walk the student into the main office and check that child in for attendance purposes.



What do we need to know about the weather and recess?



Our students will go outside the majority of the days. The midwest weather can be very hot and cold. The weather can also change quite drastically in a short amount of time. We go outside when the weather is NOT below zero. If there is active precipitation (heavy wet snow and or rain) we typically stay indoors. However, most decisions are daily and sometimes hourly. The biggest answer to weather is please be aware of the forecast and dress accordingly.

Does my student's Chromebook travel home each day?

Students are issued chromebooks to navigate their daily work. Students in the elementary schools do not take their chromebooks home at all.

If you happen to see a chromebook come home, please make sure you communicate with the classroom teacher and return that chromebook the next day.

