



BURLINGTON AREA SCHOOL DISTRICT

A great place to learn. A great place to work. Serving a great community.

TABLE OF CONTENTS

2024-2025 School Year

- Message from the Superintendent 2
- 2024-25 District Changes & BASD Strategic Plan..... 3
- Redistricting 4
- Grade Level Information5
- School Tours 5
- School Start & End Times6
- Transportation6
- Pick up / Drop off Maps 7
- Wednesday Late Start & Camp Innovation Information 8
- Burlington BAC (Before & After Care) 9
- 2024-25 Calendar 10
- Back to School Open House 11
- PTO Information.....11
- Contact Us..... 11
- Frequently Asked Questions ... 12

Welcome to Dyer Elementary School!

We are excited for your student(s) to continue with us and/or join the Dyer family within the BASD community!

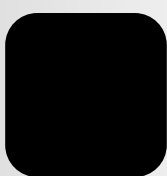
New this school year, we will have 4K - 4th grade at Dyer. All BASD 4K students will be attending Dyer Elementary school. BASD offers both half-day and full-day opportunities for 4K students.

Burlington Area School District along with Dyer Elementary School are excited about being Compassionate, Committed and Comprehensive to ensure a wonderful experience for all of our students!

Dyer Elementary School opened in 1964 as Burlington’s Junior High for students in grades 6, 7, and 8. Later, it was renamed Burlington Middle School. Beginning in 2000-2001 students in grades 4, 5, and 6 attended. From 2001-2021, the school served as an intermediate school for students in grades 5 and 6 and the upper levels of the district’s Montessori program. In Fall 2021, Dyer Elementary School started serving students in grades 4K-5, all Montessori levels, and as a site for extended care. As we open the 2024 school year, we will celebrate our 60th year as a school and hold 4K-4th grade school. The 81,451-square-foot building sits on about 10 acres with ample space for outdoor activities.

Welcome to Dyer Elementary School and thank you for allowing us to grow with your child!

**A message from
Principal
Derek Straight**



Message from the Superintendent



District Families,

As we approach the end of another school year, I hope this letter finds you and your loved ones looking forward to the opportunities and adventures that lie with summer approaching. However, before we bid farewell to the current school year, I must address a matter of great importance regarding our school district's budget.

Despite our best efforts and the unwavering support of many in our community, we find ourselves in the unfortunate position of having to reduce our budget by \$5 million due to the failure of the operational referendum. This is not a decision we take lightly, as we fully understand the impact it may have on our students, families, and staff. However, we want to assure you that even in the face of these challenges, our dedication to providing an excellent education remains steadfast.

While the budget reduction will require adjustments, it will not compromise the quality of education your students receive within our school district. Here are some key points to emphasize:

- **Commitment to Academic Excellence:** Our educators are dedicated professionals who will continue to provide high-quality instruction that meets the academic needs of every student. We will maintain our focus on rigorous curriculum standards and innovative teaching practices to ensure your student(s) receives a top-notch education.
- **Preserving Essential Programs:** Despite financial constraints, we will prioritize essential programs and initiatives that directly benefit student learning and development. This includes maintaining core academic subjects, enrichment opportunities, and activities that contribute to a well-rounded education.
- **Fiscal Responsibility:** In light of the budget reduction, we will implement measures to maximize efficiency and ensure responsible stewardship of our resources. This involves streamlining operations and seeking cost-saving solutions wherever possible to minimize the impact on educational programs and services.

We recognize that overcoming budgetary challenges requires a collective effort. As we navigate this period of adjustment, we are committed to working hand-in-hand with our community. Your active participation is vital in shaping the path forward for our school district and community. Together, we can weather this storm and emerge stronger, united in our shared commitment to providing an exceptional education for every student.

The following page outlines adjustments we will need to make for the start of the 2024-2025 school year to balance our budget along with our strategic plans for 2024 through 2029.

Thank you for your continued partnership, understanding, and support as we continue to provide an exceptional education for all students within BASD.

Sincerely,

Dr. Jill Oelslager

2024-2025 District Changes



Budget Adjustments

As a system we have to reduce our budget by \$5 million dollars as we move into the 2024-2025 school year due to the failure of the February 2024 operational referendum.

Below are the larger adjustments the district will need to execute to balance our budget:



Closing of Lyons Center Elementary School

One way to reduce our expenses is to operate with less buildings. Therefore, the district/school board decided to close Lyons Elementary School for the start of the 2024-2025 school year.



Staffing

The closing of a school building allows the district to become more efficient with staffing. Therefore, BASD will be reducing staff by 40 + employees as we move into the 2024-2025 school year.



Grade Configuration & Redistricting

With the closing of a school building and reduction in staffing, the district took a look at our grade configuration and saw the opportunity to create a new grade configuration that will allow a more effective and efficient educational system for our students and families:

- 4K will be housed at Dyer Elementary School
- 5K - 4th grade at Dyer, Waller, and Winkler
- 5th - 8th grade at Karcher Middle School
- 9th - 12th grade at Burlington High School

In addition, the Burlington community went through redistricting to ensure balance across the district. See the next page for more information about how BASD was redistricted.



Number of School Days Adjustment

As another cost-saving measure the district/board has adjusted the school calendar with a start date of September 3 and end date of May 23. The new 2024-2025 school calendar is included within this guide and is located on our basd website.



Student Fees & Facility Use Fees

Additionally, to assist with expenses the district has to increase student and facility use fees. Therefore, there will be increases in fees for:

- Clubs, athletics, fine arts, and/or other extracurriculars
- Beginning of the year registration fees
- Outside user groups

Once the increases are finalized and approved by the school board the district will communicate the changes with families and the community.

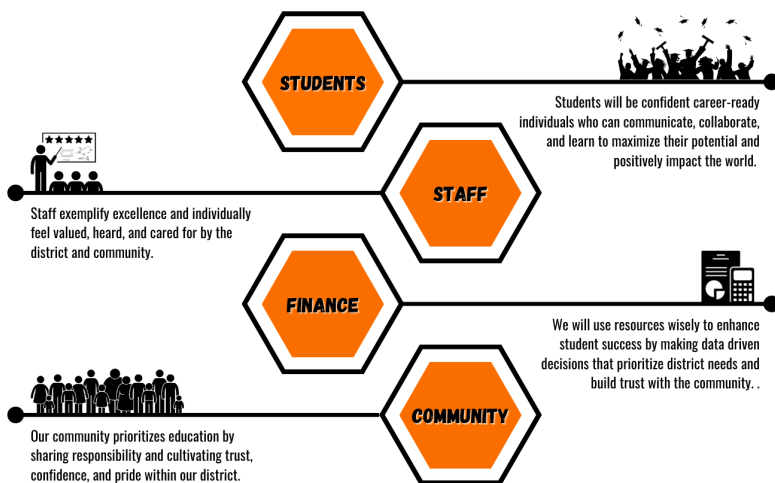
2024-2029 Strategic Plan

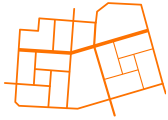
In January 2024 the school board approved the following strategic plan for 2024 through 2029.

The development of this strategic plan involved the engagement, recommendations, and opinions of students, parents, business owners, community members, and staff.

As the district progresses forward, specific strategies will be developed on a yearly basis to guide our work and achieve our goals.

To view the full strategic plan click [HERE](#).

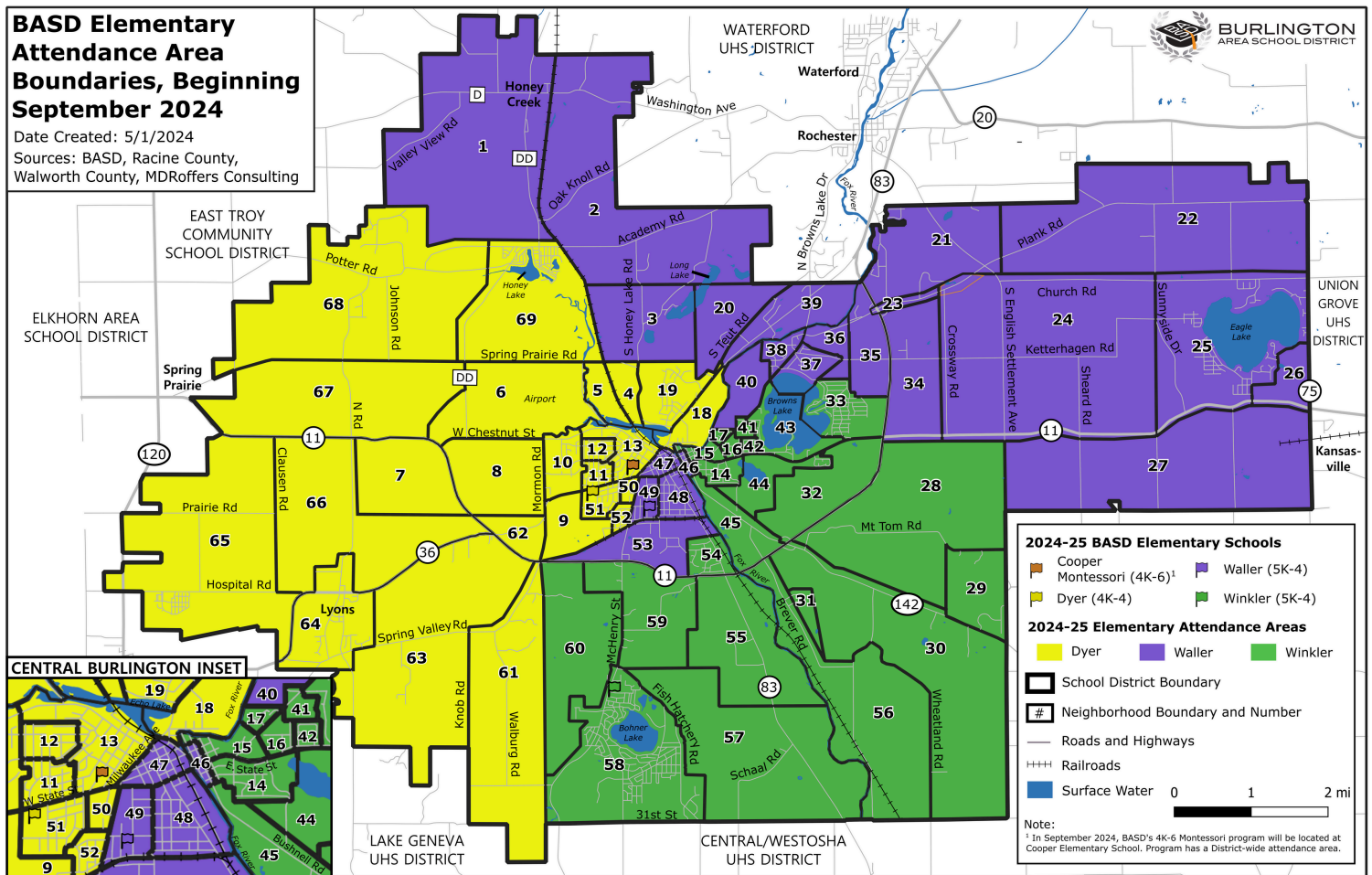




Redistricting

School district redistricting is the process of redrawing of the boundary lines and district maps related to school assignments. With the closing of Lyons, and moving 5th grade to Karcher Middle School, redistricting was an essential need. Although the process of redistricting has occurred in our recent past, it is the districts goal to maintain this plan for years to come.

Below is a map of Burlington neighborhoods and their school assignments. You may also use the app online to input your home address to learn what school your child is assigned to. This app will be available summer 2024.



Grade Level Information



As shared, Dyer is excited to have all our BASD's 4K students, as well as Kindergarten through 4th grade.

Below is our **4K - 4th grade teaching staff** for the 2024-25 school year!

The Best Teachers



Mrs. Baglow
Mrs. Battisti
Mrs. Forseth
Mrs. Gyenes
Mrs. Wodlarski



Mrs. Jankowski
Mrs. Whitten



Mrs. Farmer
Mrs. Zeien



Mrs. Bellante
Mrs. Murray



Ms. Hardt
Mrs. Shepherd
Mrs. Waryck

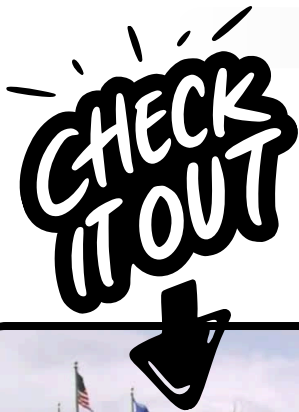


Ms. Grandi
Mrs. Kwiatkowski
Mrs. Olson



School Tours

WHEN CAN **NEW** FAMILIES COME SEE THE SCHOOL?



Families will have the chance to visit Dyer Elementary School before summer break. This gives families the chance to meet Principal Derek Straight, other staff members, see common areas, and take a tour of the school.



Dyer Elementary School

SCHOOL SITE VISIT NIGHT

DATE: May 16, 2024

Elementary Schools: 5:00 - 6:00 PM

Karcher Middle School: 6:00 - 7:00 PM

When will school start & end?



Dyer Elementary Schools' daily schedule is from **7:55 am - 3:20 pm**. Students enter the building at 7:40 AM.

4K half day students will end their day at 11:30 am.

All BASD schools start and end times can be accessed at www.basd.k12.wi.us or on the Family Calendar on page 10.



**Dyer School
Start time:**

7:55 AM

Transportation



Parent Drop Off Procedures

- Please see the picture on page 7 for a visual explanation of parent drop off procedures and locations.
- Parents will drop off all students on the south side of the school located between the school and the staff parking lot. Doors of cars should open at 7:40 AM. Students enter the building with assistance from staff.
- All students will exit the vehicle **ONLY** on the passenger side.

Parent Pick Up Procedures



- Please see the picture on page 7 for a visual explanation of parent pick up procedures and locations.
- Parents will pick up on the south side of the school located between the school and the staff parking lot. Students will exit school and with the assistance of staff, students will be directed to vehicles.
- All students will enter the vehicle **ONLY** on the passenger side.
- Pick up begins at 3:20 PM.



Student Walker Procedures

- Please see the picture on page 7 for a visual explanation of student walking procedures and locations.
- All students will exit the building with the assistance of staff and walk to parents to pick up and or walk home.
- There are staff located at three locations to cross streets.

Students Riding the Bus

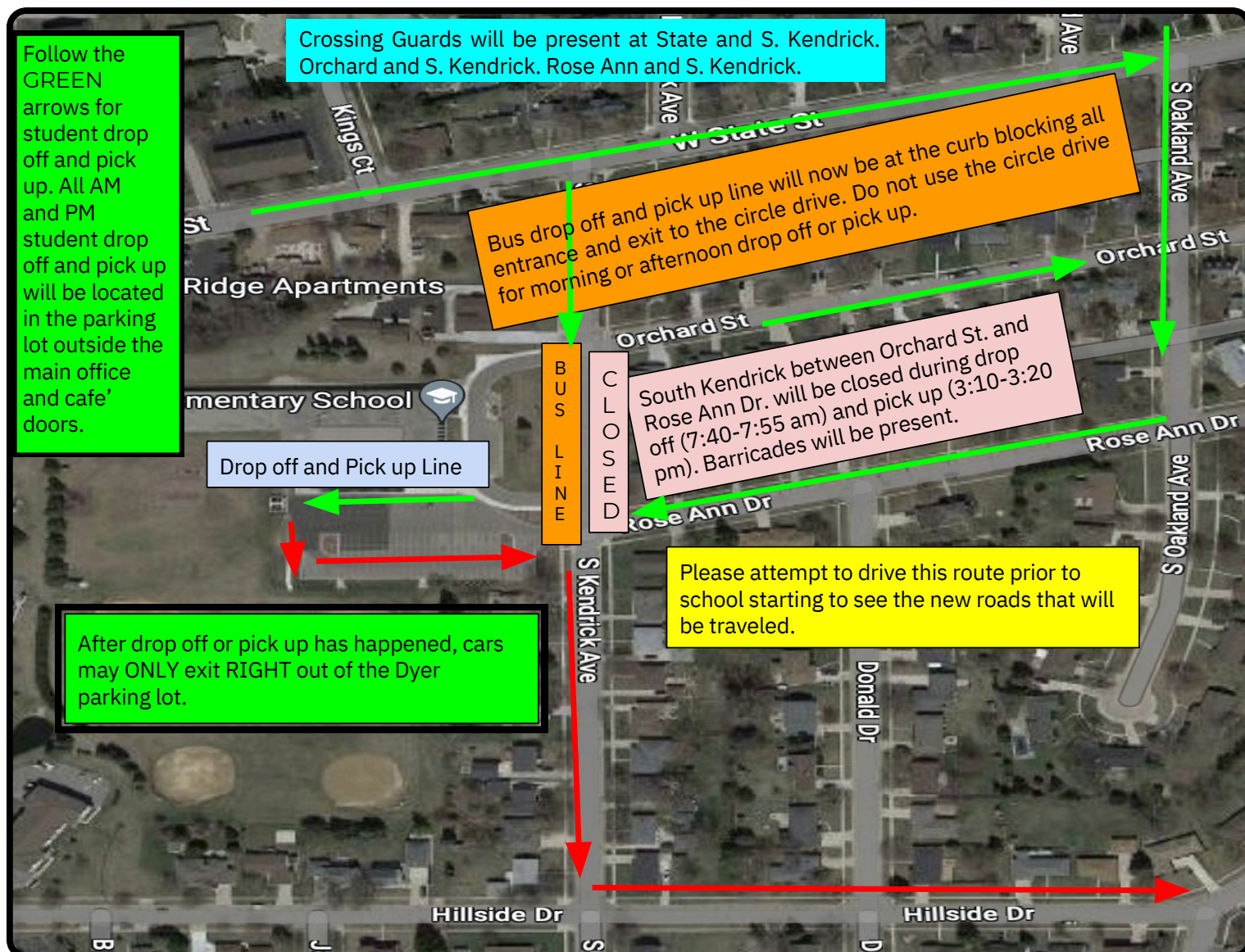


- Please see the picture on page 7 for a visual explanation of students riding the bus and procedures and locations.
- Students riding the bus will all exit the front of the building and will either be escorted by or supervised by staff while walking to buses. The buses will be parked on the curb side of South Kendrick. Buses will leave campus at approximately 3:25 PM.
- Thomas Bus will be emailing families the the end of July to indicate bus pick-up and drop-off times.

Helpful pick up / drop off map



- Please note that South Kendrick will be closed for portions of both the morning and afternoon so that cars do not get in the way of buses.
- Parent pick up and drop off can only occur with families driving into the school parking lot off of Rose Ann Drive.
- Please note the different ways in which Rose Anne Drive can be accessed in order to enter the parking lot appropriately.
- When driving down Rose Ann Drive, do not stop and or pause in front of residential driveways, as those residents do enter and exit their driveways during our regular school hours.



Wednesday Late Start Information



BASD will be utilizing Wednesday late starts during the 2024-2025 school year. There will be 17 late start Wednesdays throughout the school year which are indicated in “yellow” on the family school calendar (noted within this guide and on the BASD website). The start time for late starts at Dyer has school starting at **9:45 AM**. Doors on cars and buses open up for drop off at **9:35 AM**.



Dyer School Start
time on Wednesday
Late Start:
9:45 AM

THE WHY?

- Due to the failed referendum, BASD needs to make cost-saving adjustments within our calendar. This results in 10 fewer school days per year.
- By adding late starts to our calendar, we are able to provide mandatory trainings and professional development to our staff, while not adding additional days to the calendar.

Wednesday Innovation Camp



BASD is offering families the ability to register for Innovation Camp to support those who may need childcare during the 17 late start Wednesdays.

During this time, students will engage in exciting project-based activities around science, technology, engineering, and art!

TIME: Wednesday Innovation Camp will start at 7:45 AM and run until 9:45 AM. Parents can drop off anytime between 6:00AM - 7:30AM.

LOCATION: Information on the location(s) will be provided in August as it will be dependent on student sign up.

TRANSPORTATION: If your student attends a different school than the location for innovation camp they will be transported by bus. to their normal school by 9:45am.

COST: \$20 per student, per Wednesday morning

SIGN UP HERE

1. Log in to your **Skyward Family Access**
2. Use Online Form: **NEW! Wednesday Innovation Camp Registration**



If you already registered for before school care on Wednesdays we will add \$10 so your student is able to participate in the Innovation Camp! Those who register for the daily before care option are able to drop off starting at 6:00 AM. Innovation Camp will start at 7:45 AM.

Question 1: Is there still Burlington BAC (Before & After Care) on late start Wednesdays?

- Yes, Burlington BAC will be offered on late start Wednesdays.
- Please drop off your student to their BAC location between 6:00 AM - 7:30 AM.

Question 2: What time can I drop my students off for Wednesday Innovation Camp?

- If your student is only attending Wednesday innovation camp, please drop off between 7:30-7:45 AM/
- If your student is participating in Burlington BAC, please drop them off at their BAC location between 6:00 AM and 7:30.. A bus will drop them off at Wednesday Innovation Camp 7:45 AM.

Question 3: Can my student be bussed directly to Wednesday Innovation Camp from my home?

- No, there is no bussing to Wednesday Innovation Camp. Parents will need to drop their students off at Innovation Camp by 7:45 AM. Normal bus routes will run approximately 2 hours later than normal pick-up times for the start of the school day. *Thomas bus will be sharing specific pick-up times by the end of July.*

Burlington BAC (Before & After Care)



As BASD moves into the 2024-25 school year, we are excited to offer BAC. The location will be determined and communicated in August.

BAC Offers a Variety of Choices:

- Gym activities - ball sports, hula hoop, jump rope, etc.
- Card games & board games
- Large group games
- Arts and crafts activities
- Outdoor play
- Free play



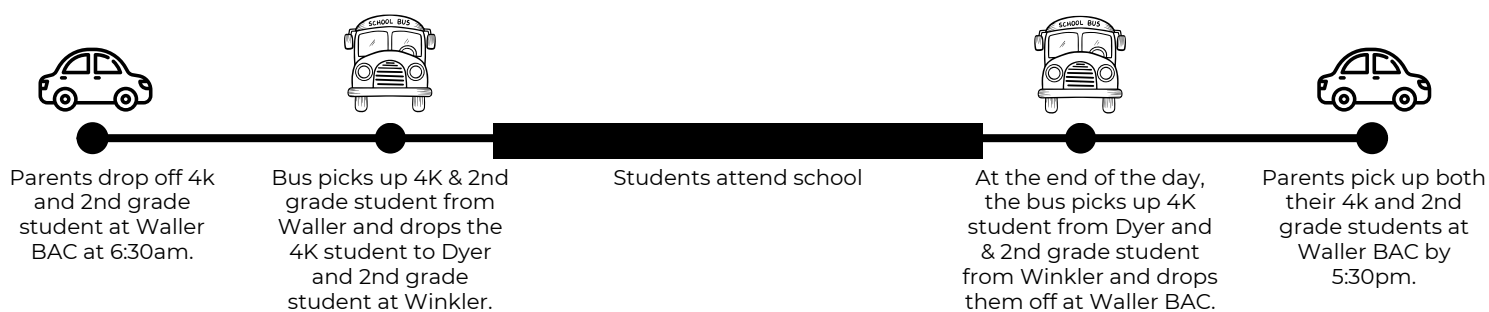
6:00 AM-School Start cost: \$10 per day
End of School - 5:30 PM cost: \$12 per day
\$22 per day if needing before and after care per day.

REGISTER HERE

Burlington BAC Transportation

- Families that sign up for Burlington BAC will be assigned to one school to attend BAC.
- Even if siblings attend different schools during the school day, they will attend the same BAC location together.
- Families will be able to drop off and pick up all siblings at the same, one location.
- Below are two examples. **PLEASE NOTE: Locations and BAC assignments will be based on student enrollment and will be assigned to families in August.**

Example 1: I have one 4K student who attends 4K at Dyer, and one 2nd grader who attends school at Winkler. I have been assigned to Waller for Burlington BAC.



Example 2: I have one 4K student who attends 4K at Dyer, and one 3rd grader who attends school at Waller. I have been assigned to Dyer for Burlington BAC.





BURLINGTON AREA SCHOOL DISTRICT

209 WAINWRIGHT AVENUE, BURLINGTON, WI 53105

(262) 763-0210

BASD.K12.WI.US

FAMILY CALENDAR 2024-2025

JULY 2024						
S	M	T	W	TH	F	S
	1	2	3	4	5	6
7	8	9	10	11	12	13
14	15	16	17	18	19	20
21	22	23	24	25	26	27
28	29	30	31			

AUGUST 2024						
S	M	T	W	TH	F	S
				1	2	3
4	5	6	7	8	9	10
11	12	13	14	15	16	17
18	19	20	21	22	23	24
25	26	27	28	29	30	31

SEPTEMBER 2024						
S	M	T	W	TH	F	S
1	NA	3**	4	5	6	7
8	9	10	11	12	13	14
15	16	17	18	19	20	21
22	23	24	25	26	27	28
29	30					

OCTOBER 2024						
S	M	T	W	TH	F	S
		1	2	3	4	5
6	7	8	9	10	11	12
13	14	15	16	17	18	19
20	21	22	23	24	NA	26
27	28	29	30	31		

NOVEMBER 2024						
S	M	T	W	TH	F	S
					1	2
3	4	5	6	7	8	9
10	11	12	13	14	15	16
17	(18)	19	20	21	22	23
24	25	26	NA	NA	NA	30

DECEMBER 2024						
S	M	T	W	TH	F	S
1	2	3	4	5	6	7
8	9	10	11	12	13	14
15	16	17	18	19	20	21
22	NA	NA	NA	NA	NA	28
29	NA	NA				

JANUARY 2025						
S	M	T	W	TH	F	S
	NA	NA	NA	NA	NA	4
5	6	7	8	9	10	11
12	13	14	15*	16	17	18
19	NA	21	22	23	24	25
26	27	28	29	30	31	

FEBRUARY 2025						
S	M	T	W	TH	F	S
						1
2	3	4	5	6	7	8
9	10	11	12	13	14	15
16	17	18	19	20	21	22
23	23	25	26	27	NA	

MARCH 2025						
S	M	T	W	TH	F	S
						1
2	3	4	5	6	7	8
9	10	11	12	13	14	15
16	17	18	19	20	(21)	22
23	NA	NA	NA	NA	NA	29
30	31					

APRIL 2024						
S	M	T	W	TH	F	S
		1	2	3	4	5
6	7	8	9	10	11	12
13	14	15	16	17	NA	19
20	21	22	23	24	25	26
27	28	29	30			

MAY 2025						
S	M	T	W	TH	F	S
				1	2	3
4	5	6	7	8	9	10
11	12	13	14	15	16	17
18	19	20	21	22	23**	24
25	NA	27	28	29	30	31

JUNE 2025						
S	M	T	W	TH	F	S
1	2	3	4	5	6	7
8	9	10	11	12	13	14
15	16	17	18	19	20	21
22	23	24	25	26	27	28
29	30					

- Sept. 2 Holiday/Labor Day
- Sept. 3-6 4K/ 5K Staggered
- Sept. 3 1st Day for 1-4, 5, 7, 9
(no school for 6, 8, 10-12)
- Sept. 4 1st Day Grades 6, 8, 10-12
(no school for 5, 7)
- Sept. 11 Late Start (Mandatory Staff Training)
- Sept. 25 Late Start (Mandatory Staff Training)
- Oct. 9 Late Start (Mandatory Staff Training)
- Oct. 23 Late Start (Mandatory Staff Training)
- Oct. 25 Day of Non-attendance
- Nov. 6 Late Start (Mandatory Staff Training)
- Nov. 18 End of Trimester 1 (PreK-8)
- Nov. 20 Late Start (Mandatory Staff Training)
- Nov. 27-29 Days of Non-attendance
- Dec. 4 Late Start (Mandatory Staff Training)
- Dec. 18 Late Start (Mandatory Staff Training)
- Dec. 23-Jan. 3 Winter Break
- Jan. 6 School resumes
- Jan. 15 Late Start, End of Semester 9-12
(Mandatory Staff Training)
- Jan. 20 Day of Non-attendance MLK Jr.
- Jan. 29 Late Start (Mandatory Staff Training)
- Feb. 12 Late Start (Mandatory Staff Training)
- Feb. 26 Late Start (Mandatory Staff Training)
- Feb. 28 Day of Student non-attendance
(Mandatory Staff Training)
- Mar. 12 Late Start (Mandatory Staff Training)
- Mar. 21 End of Trimester 2 (PreK-8)
- Mar. 24-28 Spring Break
- April 2 Late Start (Mandatory Staff Training)
- April 16 Late Start (Mandatory Staff Training)
- April 18 Day of Non-attendance
- April 30 Late Start (Mandatory Staff Training)
- May 14 Late Start (Mandatory Staff Training)
- May 23 Last Day of School
-End of Trimester 3 (PreK-8) & Sem. 2 (9-12)

LEGEND	
**	First Day / Last Day of School
	Late Start (Mandatory Staff Training)
()	End of Trimester (PreK-8)
*	End of Semester (9-12)
NA	Day of Non-Attendance

Start / End Times:		
BHS	7:15-2:47	Late Starts 8:50-2:47
Karcher	7:15-2:47	Late Starts 8:50-2:47
Cooper	8:05-3:30	Late Starts 9:55-3:30
Dyer	7:55-3:20	Late Starts 9:45-3:20
Waller	8:05-3:30	Late Starts 9:55-3:30
Winkler	8:15-3:40	Late Starts 10:05-3:40

PreK-4 (T1: 56 T2: 55 T3: 56) 9-12 (S1: 84 S2: 83)
Total Student Days: 167
 Updated: April 1, 2024

Back to School Open House



4K: 4:00 PM - 5:30 PM @ Dyer Elementary School
Cooper Montessori: 5:30 PM - 6:30 PM
Elementary Schools: 5:30 PM - 6:30 PM
Karcher Middle School: 6:30 PM- 7:30 PM
Burlington High School: 5:30 PM - 6:30 PM

**AUGUST
28TH**

Dyer Open House is a time where parents and students can find classrooms, drop off important school supplies and meet and greet not only school staff but also classmates and their families. This is a wonderful way to start our school year. Your Dyer PTO will be present so that families may be immediately connected with one of our most positive supports we have at Dyer. Be sure to attend this very important night!

PTO Information

PTO stands for Parent-Teacher Organization, consisting of parents and teachers working together to support and enrich all students. The BASD PTOs support school staff and assist in efforts to solve school needs through volunteering and funding.



Please contact your DYER PTO at
dyerptowi@gmail.com.

DYER PTO [Facebook](#)

Contact Information



Mr. Straight
*DYER ELEMENTARY
SCHOOL PRINCIPAL*
262-763-0220



Building Secretary
*DYER ELEMENTARY SCHOOL
SECRETARY*
JESSICA BAILEY
262-763-0220



Frequently Asked Questions



How does breakfast and lunch work?



All Dyer students are able to have breakfast and all students are able to purchase a lunch if they wish. Breakfast is served and eaten as soon as students enter the building. Lunch is served on a rotating basis with 4 lunch periods during the day. Each lunch period is 30 minutes long as well as a 30 minute recess. Breakfast, lunch and recess are all supervised by our school staff.

Who and/or how should I contact the school for pick up early/late to school?

If students are being picked up early or are coming to school late we ask the following to occur. Please call school and connect with attendance and or our health office and either speak with or leave a message regarding the pick up or late drop off.

If dropping off late, we ask all parents and or guardians to walk the student into the main office and check that child in for attendance purposes



What do we need to know about weather and recess?



Our students will go outside the majority of the days. The midwest weather can be very hot and cold. The weather can also change quite drastically in a short amount of time. Most decisions are made daily and sometimes hourly. The biggest answer to weather related questions is please be aware of the forecast and dress accordingly.

Does my student's chromebook travel home each day?

Students are issued chromebooks to navigate their daily work. Students in the elementary schools do not take their chromebooks home at all. If you happen to see a chromebook come home, please make sure you communicate with the classroom teacher and return that chromebook the next day.

