



BURLINGTON AREA SCHOOL DISTRICT

A great place to learn. A great place to work. Serving a great community.

TABLE OF CONTENTS

2024-2025 School Year

- Message from the Superintendent 2
- 2024-25 District Changes & BASD Strategic Plan..... 3
- Grade Level Information4
- School Tours 4
- School Start & End Times5
- Transportation5
- Pick up / Drop off Maps 6
- Wednesday Late Start & Camp Innovation Information 7
- Burlington BAC (Before & After Care) 8
- 2024-25 Calendar 9
- Back to School Open House ... 10
- PTO Information.....10
- Contact Us..... 10
- Frequently Asked Questions 11

Greetings, Cooper Montessori!

We are excited for your students to continue with us and/or join us at Cooper Montessori!

For the 2024-2025 school year, we will continue to have 4K - 6th grade at Cooper Montessori. BASD offers both half-day and full-day opportunities for 4K students. Additionally, we are excited to welcome Wisconsin Connect Charter School, BASD's virtual charter school, to our building next year to offer enrichment programming for students in grades 4K-8th grade.

Please take the time to read through the 2024-25 Cooper guide.

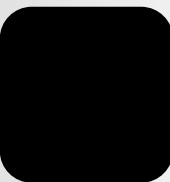
The Burlington Area School District is excited to continue to offer the community a public school **Montessori** option for students in grades 4K-6th grade!

At Cooper, we are able to embed the Burlington Area School District's 3 C's (Compassionate, Comprehensive, Committed) within the Montessori philosophy to ensure students grow in their capacity for independence and exploration within the learning environment.

Montessori programming fosters rigorous, self-motivated growth for children and adolescents in all areas of their development—cognitive, emotional, social, and physical. By grouping students in grade bands, students are supported in fostering a greater sense of community with their peers and teacher.

We look forward to all the amazing experiences that we plan to offer our students in the 2024-2025 school year and we look forward to your child joining us in the adventure!

A message from the Cooper Staff



Message from the Superintendent



District Families,

As we approach the end of another school year, I hope this letter finds you and your loved ones looking forward to the opportunities and adventures that lie ahead with summer approaching. However, before we bid farewell to the current school year, I must address a matter of great importance regarding our school district's budget.

Despite our best efforts and the unwavering support of many in our community, we find ourselves in the unfortunate position of having to reduce our budget by \$5 million due to the failure of the operational referendum. This is not a decision we take lightly, as we fully understand the impact it may have on our students, families, and staff. However, we want to assure you that even in the face of these challenges, our dedication to providing an excellent education remains steadfast.

While the budget reduction will require adjustments, it will not compromise the quality of education your students receive within our school district. Here are some key points to emphasize:

- **Commitment to Academic Excellence:** Our educators are dedicated professionals who will continue to provide high-quality instruction that meets the academic needs of every student. We will maintain our focus on rigorous curriculum standards and innovative teaching practices to ensure your student(s) receives a top-notch education.
- **Preserving Essential Programs:** Despite financial constraints, we will prioritize essential programs and initiatives that directly benefit student learning and development. This includes maintaining core academic subjects, enrichment opportunities, and activities that contribute to a well-rounded education.
- **Fiscal Responsibility:** In light of the budget reduction, we will implement measures to maximize efficiency and ensure responsible stewardship of our resources. This involves streamlining operations and seeking cost-saving solutions wherever possible to minimize the impact on educational programs and services.

We recognize that overcoming budgetary challenges requires a collective effort. As we navigate this period of adjustment, we are committed to working hand-in-hand with our community. Your active participation is vital in shaping the path forward for our school district and community. Together, we can weather this storm and emerge stronger, united in our shared commitment to providing an exceptional education for every student.

The following page outlines adjustments we will need to make for the start of the 2024-2025 school year to balance our budget along with our strategic plans for 2024 through 2029.

Thank you for your continued partnership, understanding, and support as we continue to provide an exceptional education for all students within BASD.

Sincerely,

Dr. Jill Oelslager

2024-2025 District Changes



Budget Adjustments

As a system we have to reduce our budget by \$5 million dollars as we move into the 2024-2025 school year due to the failure of the February 2024 operational referendum.

Below are the larger adjustments the district will need to execute to balance our budget:



Closing of Lyons Center Elementary School

One way to reduce our expenses is to operate with less buildings. Therefore, the district/school board decided to close Lyons Elementary School for the start of the 2024-2025 school year.



Staffing

The closing of a school building allows the district to become more efficient with staffing. Therefore, BASD will be reducing staff by 40 + employees as we move into the 2024-2025 school year.



Grade Configuration & Redistricting

With the closing of a school building and reduction in staffing the district took a look at our grade configuration and saw the opportunity to create a new grade configuration that will allow a more effective and efficient educational system for our students and families:

- 4K will be housed at Dyer Elementary School
- 5K - 4th grade at Dyer, Waller, and Winkler
- 5th - 8th grade at Karcher Middle School
- 9th - 12th grade at Burlington High School



Number of School Days Adjustment

As another cost-saving measure the district/board has adjusted the school calendar with a start date of September 3 and end date of May 23. The new 2024-2025 school calendar is included within this guide and is located on our BASD website.



Student Fees & Facility Use Fees

Additionally, to assist with expenses the district has to increase student and facility use fees. Therefore, there will be increases in fees for:

- Clubs, athletics, fine arts, and/or other extracurriculars
- Beginning of the year registration fees
- Outside user groups

Once the increases are finalized and approved by the school board, the district will communicate the changes with families and the community.

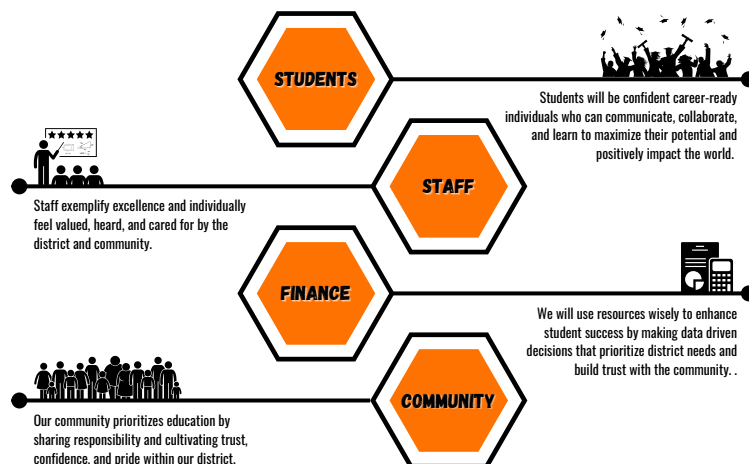
2024-2029 Strategic Plan

In January 2024 the school board approved the following Strategic Plan for 2024 through 2029.

The development of this strategic plan involved the engagement, recommendations, and opinions of students, parents, business owners, community members, and staff.

As the district progresses forward, specific strategies will be developed on a yearly basis to guide our work and achieve our goals.

To view the full strategic plan click [HERE](#).



Grade Level Information



Cooper is excited to continue to offer Montessori programming for students in 4K-6th grade. The Montessori approach is what sets Cooper apart from the other elementary schools in BASD. Our staff are passionate about the benefits that Montessori offers to students and their families.

Below is our teaching staff for the 2024-25 school year!



Mrs. Jennie King
Mrs. Sydney Pritzl
Mrs. Amy Rice



Mrs. Kristy Ascheman
Mrs. Kirsten Eck
Mrs. Deb Trewyn-Way



Mrs. Jackie Bladow
Mrs. Michelle Glisch
Mrs. Anneke Thompson

The Best Teachers



School Tours

WHEN CAN **NEW** FAMILIES COME SEE THE SCHOOL?



If you are interested in touring Cooper Montessori prior to the end of the year, please reach out to interim Principal, Amanda Riggs, at cooperprincipal@basd.k12.wi.us or (262) 763-0180.

Touring provides families with the opportunity to meet staff members, see common areas, and learn more about what Montessori programming offers.



Cooper Montessori School

When will school start & end?



Cooper Montessori School's daily schedule is from 8:05 AM-3:30 PM, with doors opening at 7:55 AM.

All BASD schools start and end times can be accessed at www.basd.k12.wi.us or on the Family Calendar on page 9.



Cooper School
Start time:

8:05 AM

Transportation



Parent Drop Off Procedures

- Enter the parking lot off Kendall St.
- Pull into the "Drop Off" lane where a staff member will assist your child getting out of the vehicle and into the building
- If you wish to walk your child up, please park in the main parking lot before taking your child to the entrance

Parent Pick Up Procedures



- Enter the parking lot off Kendall St.
- Pull into the "Pick Up" lane where a staff member will assist your child to your vehicle
- If you plan to pick your child up early, please contact the office and let them know ahead of time



Student Walker Procedures

- Students will utilize the crossing guards to get across Kendall/Amanda Street
- Students are asked to please stay on the sidewalk and be respectful of neighboring yards when walking home

Students Riding the Bus



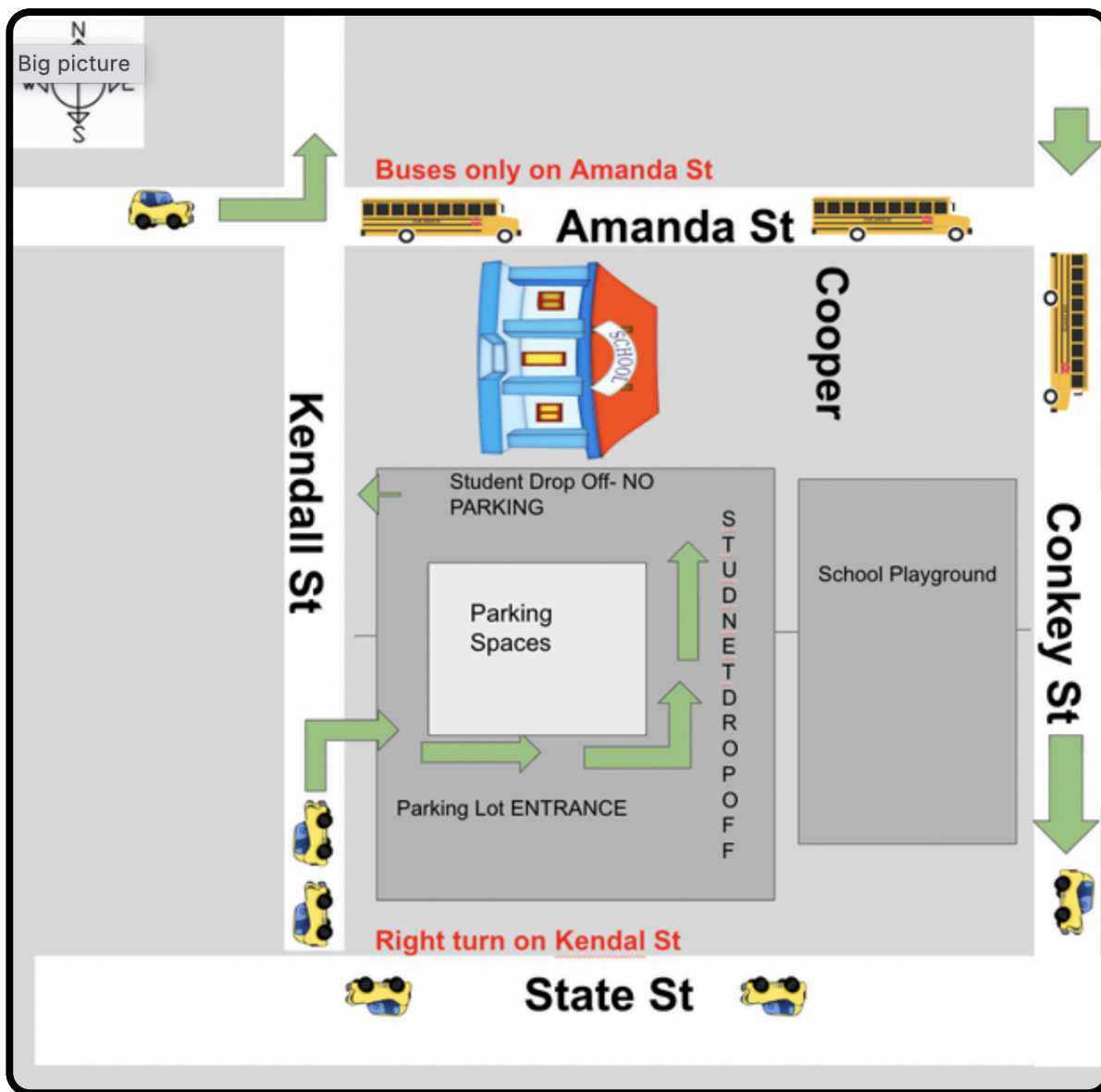
- Upon dismissal, bus riders will line up on Amanda Street
- If your child plans to ride home with another student on a different bus, this **must** be arranged ahead of time so that your child has a permission slip to give the driver
- Thomas Bus will email families by the end of July to indicate bus pick-up/drop-off times and locations.

 Thomas Bus phone number: (262) 763-7564

Helpful pick up / drop off maps



- If you are dropping off or picking up your child, please follow the green arrows to avoid unnecessary traffic congestion.
- If you plan to walk your child up to the building, you will need to park in the main parking lot. We try to keep the “Drop off lane” continuously moving, so please do not stop or park in that lane.



Wednesday Late Start Information



BASD will be utilizing Wednesday late starts during the 2024-2025 school year. There will be 17 late start Wednesdays throughout the school year which are indicated in “yellow” on the family school calendar (noted within this guide and on the BASD website). The start time for late starts at Cooper will be **9:55 AM** with drop off at **9:45 AM**.

THE WHY?

- Due to the failed referendum, BASD needs to make cost saving adjustments with our calendar. This results in 10 less school days per year.
- By adding late starts to our calendar, we are able to provide mandatory trainings and professional development to our staff, while not adding additional days to the calendar.



Cooper School Start
time on Wednesday
Late Start:

9:55 AM

Wednesday Innovation Camp



BASD is offering families the ability to register for Innovation Camp to support those who may need childcare during the 17 late start Wednesdays.

During this time, students will engage in exciting project-based activities around science, technology, engineering, and art!

TIME: Wednesday Innovation Camp will start at 7:45 AM and run until 9:45 AM. Parents can drop off anytime between 6:00AM - 7:30AM.

LOCATION: Information on the location(s) will be provided in August as it will be dependent on student sign up.

TRANSPORTATION: If your student attends a different school than the location for innovation camp they will be transported by bus. to their normal school by 9:45am.

COST: \$20 per student, per Wednesday morning

[**SIGN UP HERE**](#)

1. Log in to your **Skyward Family Access**
2. Use Online Form: **Burlington Wednesday Innovation Camp**

If you already registered for before school care on Wednesdays we will add \$10 so your student is able to participate in the Innovation Camp! Those who register for the daily before care option are able to drop off starting at 6:00 AM. Innovation Camp will start at 7:45 AM.

Question 1: Is there still Burlington BAC (Before & After Care) on late start Wednesdays?

- Yes, Burlington BAC will be offered on late start Wednesdays.
- Please drop off your student to their BAC location between 6:00 AM - 7:30 AM.

Question 2: What time can I drop my students off for Wednesday Innovation Camp?

- If your student is only attending Wednesday innovation camp, please drop off between 7:30-7:45 AM/
- If your student is participating in Burlington BAC, please drop them off at their BAC location between 6:00 AM and 7:30.. A bus will drop them off at Wednesday Innovation Camp 7:45 AM.

Question 3: Can my student be bussed directly to Wednesday Innovation Camp from my home?

- No, there is no bussing to Wednesday Innovation Camp. Parents will need to drop their students off at Innovation Camp by 7:45 AM. Normal bus routes will run approximately 2 hours later than normal pick-up times for the start of the school day. *Thomas bus will be sharing specific pick-up times by the end of July.*

Burlington BAC (Before & After Care)



As BASD moves into the 2024-25 school year, we are excited to offer BAC. The location will be determined and communicated in August.

BAC Offers a Variety of Choices:

- Gym activities - ball sports, hula hoop, jump rope, etc.
- Card games & board games
- Large group games
- Arts and crafts activities
- Outdoor play
- Free play



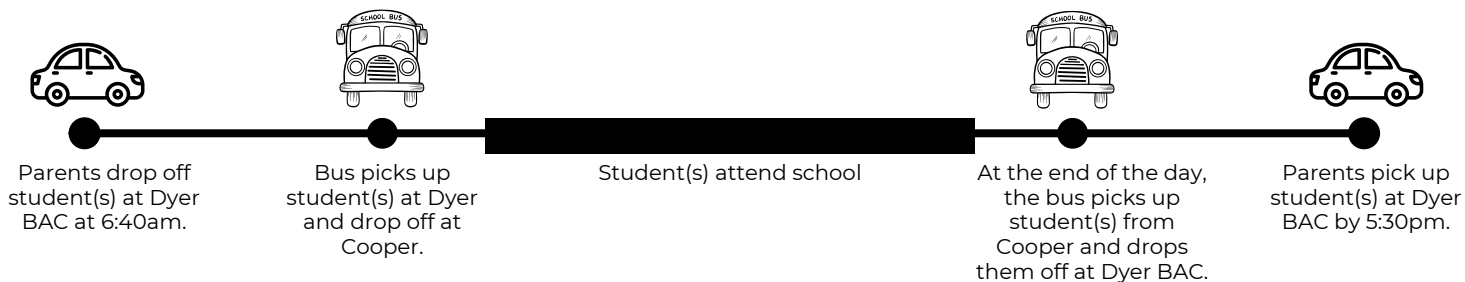
6:00 AM-School Start cost: \$10 per day
End of School - 5:30 PM cost: \$12 per day
\$22 per day if needing before and after care per day.

[REGISTER HERE](#)

Burlington BAC Transportation

- Families that sign up for Burlington BAC will be assigned to one school to attend BAC.
- Even if siblings attend different schools during the school day, they will attend the same BAC location together.
- Families will be able to drop off and pick up all siblings at the same, one location.
- Below are two examples. **PLEASE NOTE: Locations and BAC assignments will be based on student enrollment and will be assigned to families in August.**

Example: I have one or more students who attend Cooper and have been assigned to Dyer for Burlington BAC.





BURLINGTON AREA SCHOOL DISTRICT

209 WAINWRIGHT AVENUE, BURLINGTON, WI 53105

(262) 763-0210

BASD.K12.WI.US

FAMILY CALENDAR 2024-2025

JULY 2024						
S	M	T	W	TH	F	S
	1	2	3	4	5	6
7	8	9	10	11	12	13
14	15	16	17	18	19	20
21	22	23	24	25	26	27
28	29	30	31			

JANUARY 2025						
S	M	T	W	TH	F	S
	NA	NA	NA	NA	NA	4
5	6	7	8	9	10	11
12	13	14	15*	16	17	18
19	NA	21	22	23	24	25
26	27	28	29	30	31	

AUGUST 2024						
S	M	T	W	TH	F	S
				1	2	3
4	5	6	7	8	9	10
11	12	13	14	15	16	17
18	19	20	21	22	23	24
25	26	27	28	29	30	31

FEBRUARY 2025						
S	M	T	W	TH	F	S
						1
2	3	4	5	6	7	8
9	10	11	12	13	14	15
16	17	18	19	20	21	22
23	23	25	26	27	NA	

SEPTEMBER 2024						
S	M	T	W	TH	F	S
1	NA	3**	4	5	6	7
8	9	10	11	12	13	14
15	16	17	18	19	20	21
22	23	24	25	26	27	28
29	30					

MARCH 2025						
S	M	T	W	TH	F	S
						1
2	3	4	5	6	7	8
9	10	11	12	13	14	15
16	17	18	19	20	(21)	22
23	NA	NA	NA	NA	NA	29
30	31					

OCTOBER 2024						
S	M	T	W	TH	F	S
		1	2	3	4	5
6	7	8	9	10	11	12
13	14	15	16	17	18	19
20	21	22	23	24	NA	26
27	28	29	30	31		

APRIL 2024						
S	M	T	W	TH	F	S
		1	2	3	4	5
6	7	8	9	10	11	12
13	14	15	16	17	NA	19
20	21	22	23	24	25	26
27	28	29	30			

NOVEMBER 2024						
S	M	T	W	TH	F	S
					1	2
3	4	5	6	7	8	9
10	11	12	13	14	15	16
17	(18)	19	20	21	22	23
24	25	26	NA	NA	NA	30

MAY 2025						
S	M	T	W	TH	F	S
				1	2	3
4	5	6	7	8	9	10
11	12	13	14	15	16	17
18	19	20	21	22	23**	24
25	NA	27	28	29	30	31

DECEMBER 2024						
S	M	T	W	TH	F	S
1	2	3	4	5	6	7
8	9	10	11	12	13	14
15	16	17	18	19	20	21
22	NA	NA	NA	NA	NA	28
29	NA	NA				

JUNE 2025						
S	M	T	W	TH	F	S
1	2	3	4	5	6	7
8	9	10	11	12	13	14
15	16	17	18	19	20	21
22	23	24	25	26	27	28
29	30					

- Sept. 2 Holiday/Labor Day
- Sept. 3-6 4K/ 5K Staggered
- Sept. 3 1st Day for 1-4, 5, 7, 9
(no school for 6, 8, 10-12)
- Sept. 4 1st Day Grades 6, 8, 10-12
(no school for 5, 7)
- Sept. 11 Late Start (Mandatory Staff Training)
- Sept. 25 Late Start (Mandatory Staff Training)
- Oct. 9 Late Start (Mandatory Staff Training)
- Oct. 23 Late Start (Mandatory Staff Training)
- Oct. 25 Day of Non-attendance
- Nov. 6 Late Start (Mandatory Staff Training)
- Nov. 18 End of Trimester 1 (PreK-8)
- Nov. 20 Late Start (Mandatory Staff Training)
- Nov. 27-29 Days of Non-attendance
- Dec. 4 Late Start (Mandatory Staff Training)
- Dec. 18 Late Start (Mandatory Staff Training)
- Dec. 23-Jan. 3 Winter Break
- Jan. 6 School resumes
- Jan. 15 Late Start, End of Semester 9-12
(Mandatory Staff Training)
- Jan. 20 Day of Non-attendance MLK Jr.
- Jan. 29 Late Start (Mandatory Staff Training)
- Feb. 12 Late Start (Mandatory Staff Training)
- Feb. 26 Late Start (Mandatory Staff Training)
- Feb. 28 Day of Student non-attendance
(Mandatory Staff Training)
- Mar. 12 Late Start (Mandatory Staff Training)
- Mar. 21 End of Trimester 2 (PreK-8)
- Mar. 24-28 Spring Break
- April 2 Late Start (Mandatory Staff Training)
- April 16 Late Start (Mandatory Staff Training)
- April 18 Day of Non-attendance
- April 30 Late Start (Mandatory Staff Training)
- May 14 Late Start (Mandatory Staff Training)
- May 23 Last Day of School
-End of Trimester 3 (PreK-8) & Sem. 2 (9-12)

LEGEND	
**	First Day / Last Day of School
	Late Start (Mandatory Staff Training)
()	End of Trimester (PreK-8)
*	End of Semester (9-12)
NA	Day of Non-Attendance

Start / End Times:

BHS	7:15-2:47	Late Starts 8:50-2:47
Karcher	7:15-2:47	Late Starts 8:50-2:47
Cooper	8:05-3:30	Late Starts 9:55-3:30
Dyer	7:55-3:20	Late Starts 9:45-3:20
Waller	8:05-3:30	Late Starts 9:55-3:30
Winkler	8:15-3:40	Late Starts 10:05-3:40

PreK-4 (T1: 56 T2: 55 T3: 56) 9-12 (S1: 84 S2: 83)

Total Student Days: 167

Updated: April 1, 2024

Back to School Open House



4K: 4:00 PM - 5:30 PM @ Dyer Elementary School
Cooper Montessori: 5:30 PM - 6:30 PM
Elementary Schools: 5:30 PM - 6:30 PM
Karcher Middle School: 6:30 PM- 7:30 PM
Burlington High School: 5:30 PM - 6:30 PM

**AUGUST
28TH**

This is a great opportunity for you to get to know Cooper Montessori beyond the information on our website. You and your child can check out the classroom and meet the staff, familiarize yourself with the layout of the building and ask any questions you may still have regarding the school year. We look forward to seeing all of you and partnering with you and your child to make it a successful year!

PTO Information

PTO stands for Parent-Teacher Organization, consisting of parents and teachers working together to support and enrich all students. The BASD PTOs support school staff and assist in efforts to solve school needs through volunteering and funding.

If you would like more information about the PTO or are interested in joining, contact us at CooperPTO@basd.k12.wi.us.

Please connect with us on [Facebook!](#)



Contact Information



Amanda Riggs

**COOPER MONTESSORI
INTERIM PRINCIPAL**

262-763-0180 Ext.2210

cooperprincipal@basd.k12.wi.us



Chris Swantz

**COOPER MONTESSORI ADMIN.
ASSISTANT/HEALTH AIDE**

(262)763-0180 ext. 2200

cswantz@basd.k12.wi.us



**For our new principal for
the 2024-2025 school year
to be announced soon!**



Frequently Asked Questions



Breakfast/Lunch Information



1. **Where can I find the breakfast/lunch menu for the week?** Log into www.basd.k12.wi.us, find Cooper Montessori under “Schools” and click on the tiny fork and spoon in the upper right corner.
2. **How do I add money to my child’s Skyward account?** Log into your child’s Skyward account using the username and password given to you at registration. Click on the (+) sign on the left-hand side and go down to “Food Service” and select ‘Make a Payment’. Follow the prompts.
3. **What do I do if my child has food allergies?** Be sure to communicate this with the office as well as your child’s teacher so that accommodations can be made as necessary.

Who do I contact if I’m picking up/dropping off early/late to school?

1. You can reach the front office by dialing **(262)763-0180 ext.2200**. Let the office know your plans, and the secretary will communicate this with your child’s teacher.
2. You can **email your child’s teacher** directly, but please also **copy the secretary** at the main office (cswantz@basd.k12.wi.us) to make sure everyone is aware of the changes.
3. You can put a **request in Skyward online** by doing the following:
 - Log in to your Family Access Skyward Account & choose “Attendance” on left
 - Click Absence Requests at the top & “Add Request”
 - If your student will only be gone a portion of the day, unclick the box marked ‘All Day’ and enter the appropriate times



What sets Montessori apart from traditional education?

Montessori is a scientifically based education approach that emphasizes independence, freedom within limits, and respect for a child’s natural psychological, physical, and social development. It was developed by Italian physician and educator Maria Montessori.

At the root of Montessori is the belief that all children are unique individuals who possess immense potential, wanting to learn and be productive. Montessori teachers guide each child through the learning process by using materials that fit their specific needs and pace. Classes are organized to encompass a three-year age span, which allows younger students the stimulation of the older children, who in turn benefit from serving as role models. With two-thirds of the class returning each year, the classroom culture remains quite stable. Working in the same class for three years allows students to develop a strong sense of community with classmates and teachers.



What is the “Outdoor Education” program?

Montessori learning incorporates the love of the natural world and learning in unique, inspiring environments. We are lucky to have access to BASD’s school forest, where our students can explore and learn about the environment around them. Each grade level visits the school forest about once every three weeks as part of our curriculum for a variety of fun learning activities.

